

How Do You *Princess?* • The Courage & Kindness Club Presents:

QUEEN ANNA & ELSA'S FAMILY PORTRAIT



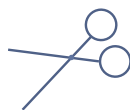
You will need:



A PRINTER



FOUR SHEETS
OF PAPER OR
CARDSTOCK



KID FRIENDLY
SCISSORS



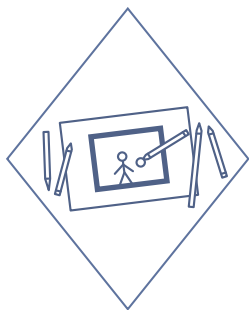
COLORING
SUPPLIES

Let's get started!



STEP 1

Print out a copy of the Queen Anna & Elsa's Family Portrait template.



STEP 2

Take time to draw your own family portrait. Include all the people you consider family: your pets, your friends, your parents, your grandparents, any and everyone you love. When you are done, color in the picture.



STEP 3

Great job! Now, use your scissors to carefully cut out the picture frame. Remember, all cutting should be done by an adult.

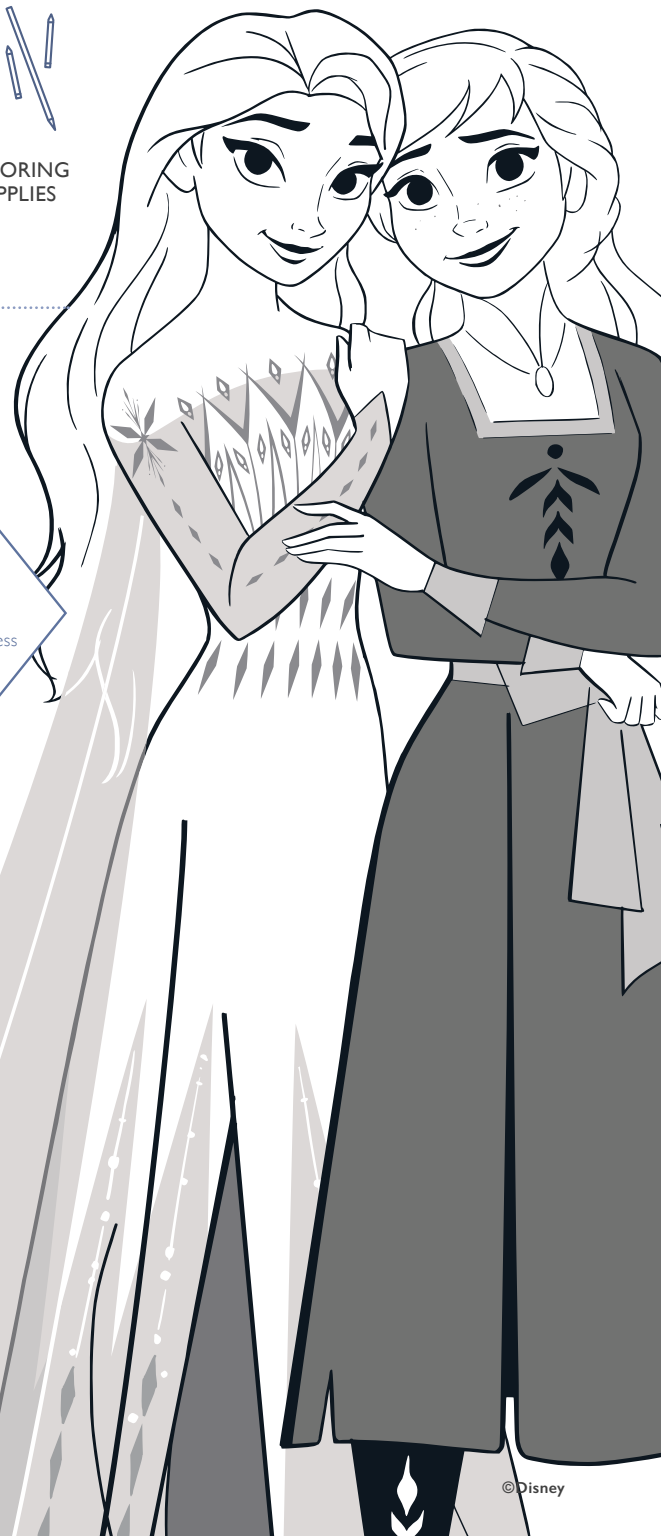
STEP 4

Good job!

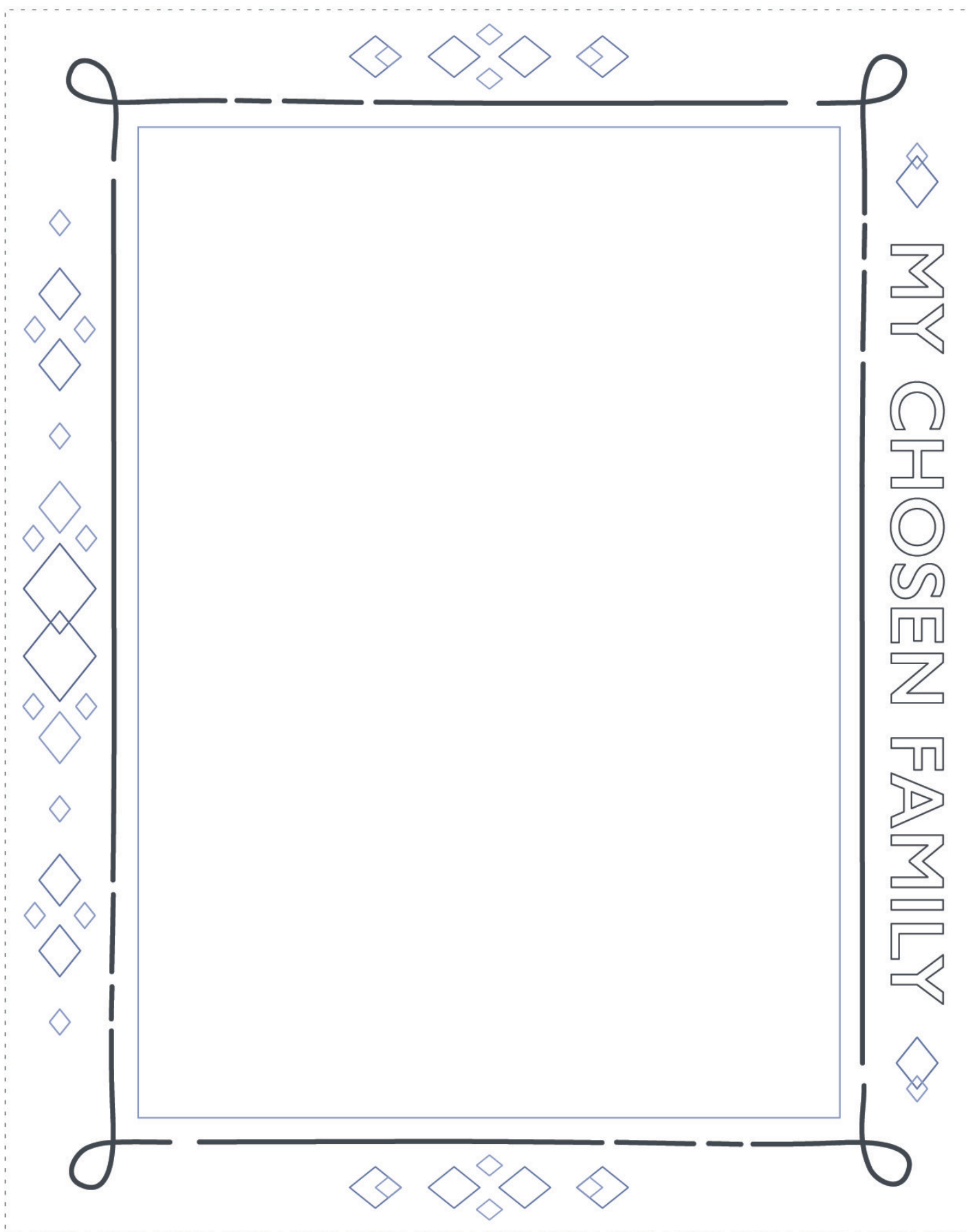
Share your finished portrait with your chosen family members.

Be sure to join the Courage & Kindness Club in their next adventure as they continue to learn the courage & kindness it takes to be a princess.

Queen Anna and Elsa know family can come in all shapes and sizes.

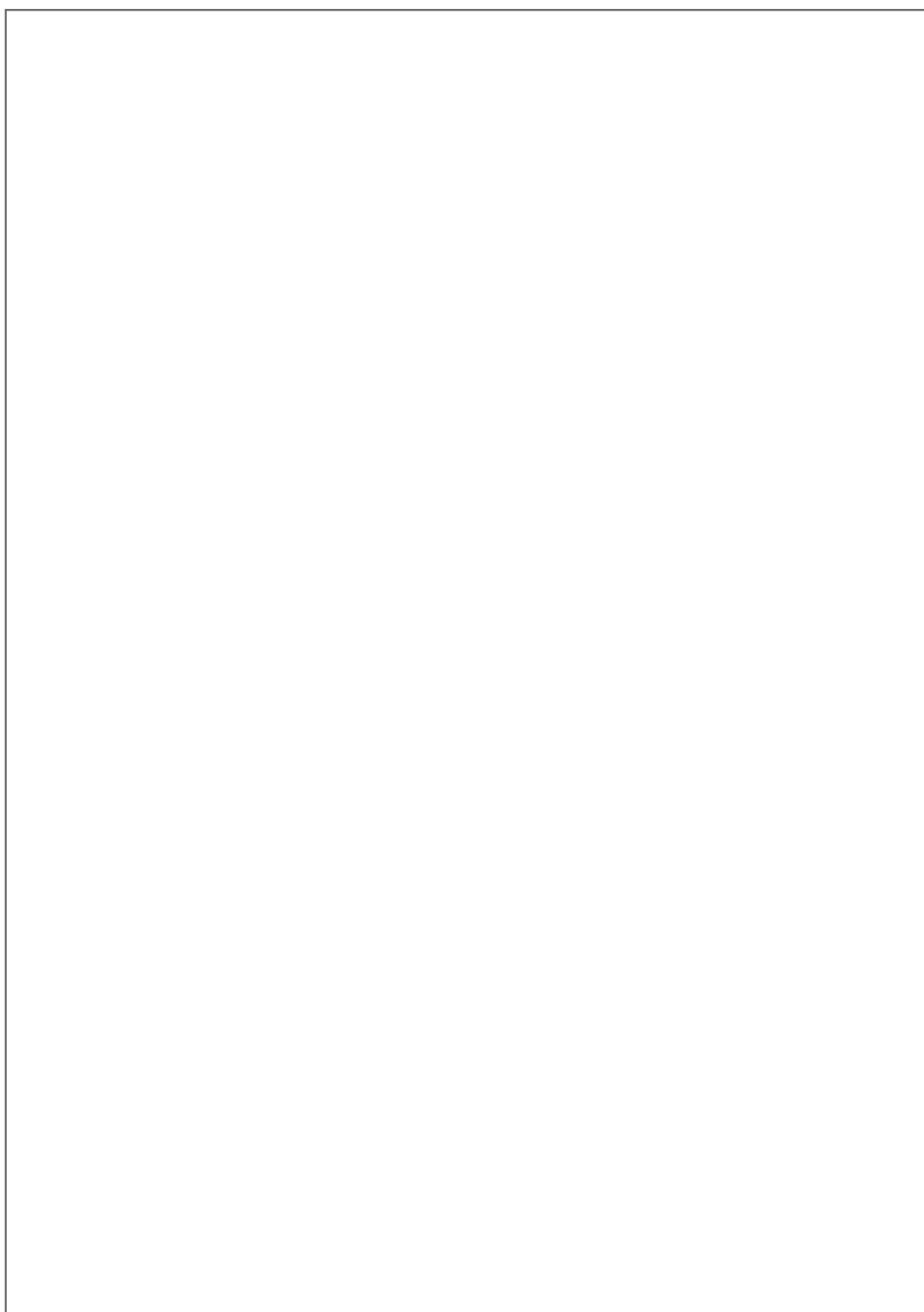


CUT ALONG THE DASHED LINES





CUT ALONG THE DASHED LINES



MY CHOSEN FAMILY

FAMILY AT HEART

CUT ALONG THE DASHED LINES

FOREVER
SISTERS

YOU
ARE MY FAVE
FOR LIFE

I'LL SHARE
MY CROWN WITH
◇◇ YOU ◇◇

