

# NEMO COSTUME

*inspired by*

Disney • PIXAR  
**FINDING  
DORY**



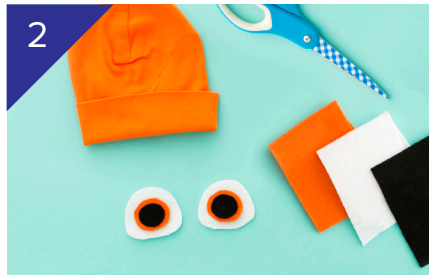
## MATERIALS:

orange beanie  
orange shirt  
orange leggings  
white sandals  
orange, white and black felt  
scissors

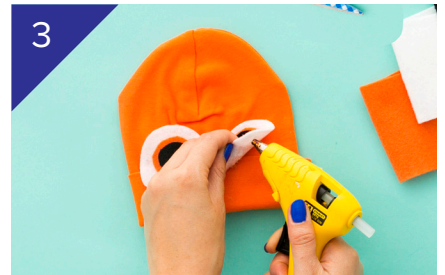
orange ribbon  
white, black and orange tulle  
white and black fabric paint  
paint brushes  
glue gun



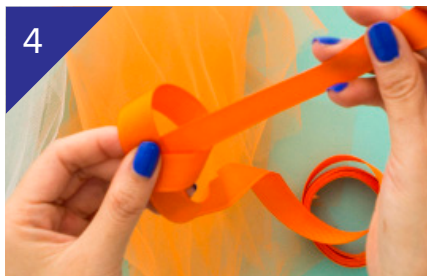
1  
Paint white and black stripes on shirt.



2  
Cut circles out of felt to form eyes.



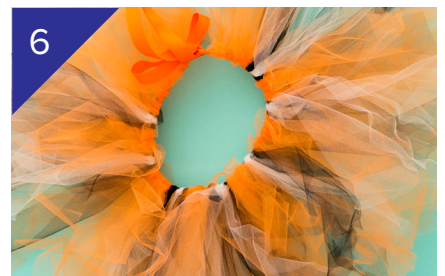
3  
Glue eyes on beanie.



4  
Take the ribbon and tie two knots 12 inches from each end.



5  
Tie tulle along ribbon starting from one knot and ending at the other.



6  
Tie ends together to make a tutu.  
Put on costume!

On Digital HD &  Disney Movies Anywhere October 25  
On Blu-ray™ November 15

©2016 Disney/Pixar

**PG**