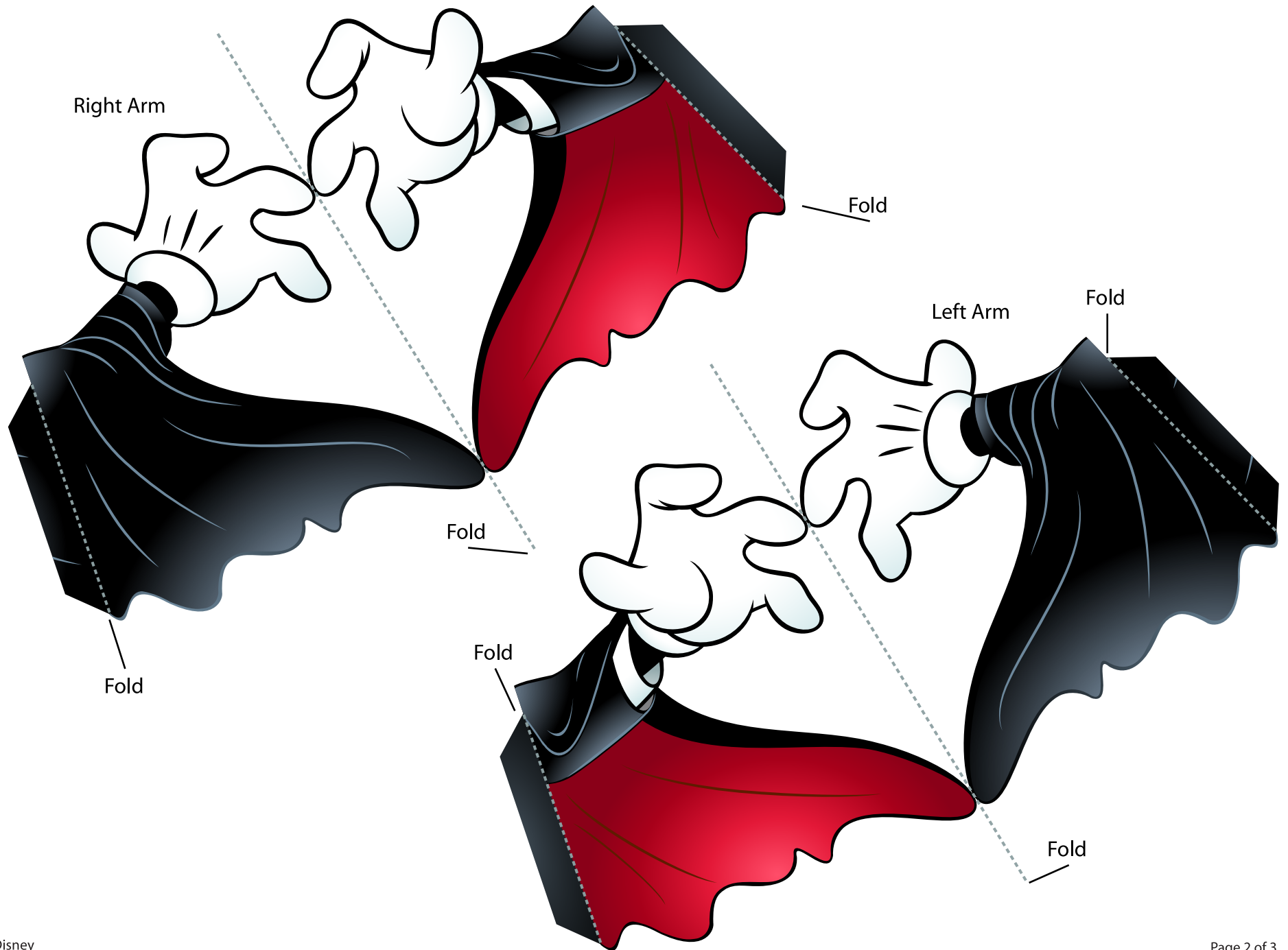




# Vampire Mickey Candy Box



## Vampire Mickey Candy Box: Instructions

1. Print the template on regular paper or cardstock and cut out the pieces. Make all folds along dashed lines.
2. Using either glue or double-sided tape, close Mickey's body by securing the A tab to the back piece.
3. Close the bottom of the candy box by securing the B tabs, followed by the C tab.
4. Fold each of Mickey's arms in half along the dashed line so the design is two-sided. Without sticking the tabs together, secure the two sides.
5. Butterfly the tabs on Mickey's arms, and use them to secure his arms to the sides of his body.
6. Finally, fold the top dashed lines on Mickey's legs toward you, and fold the lower dashed lines away from you – this will help him sit in place.