

Captain Gizmo



Reminder

Cutting is intended for grown-ups only!

What You'll Need

- 8 1/2" x 11" cardstock (we recommend 110-pound paper for best results)
- Scissors
- Ruler
- Glue



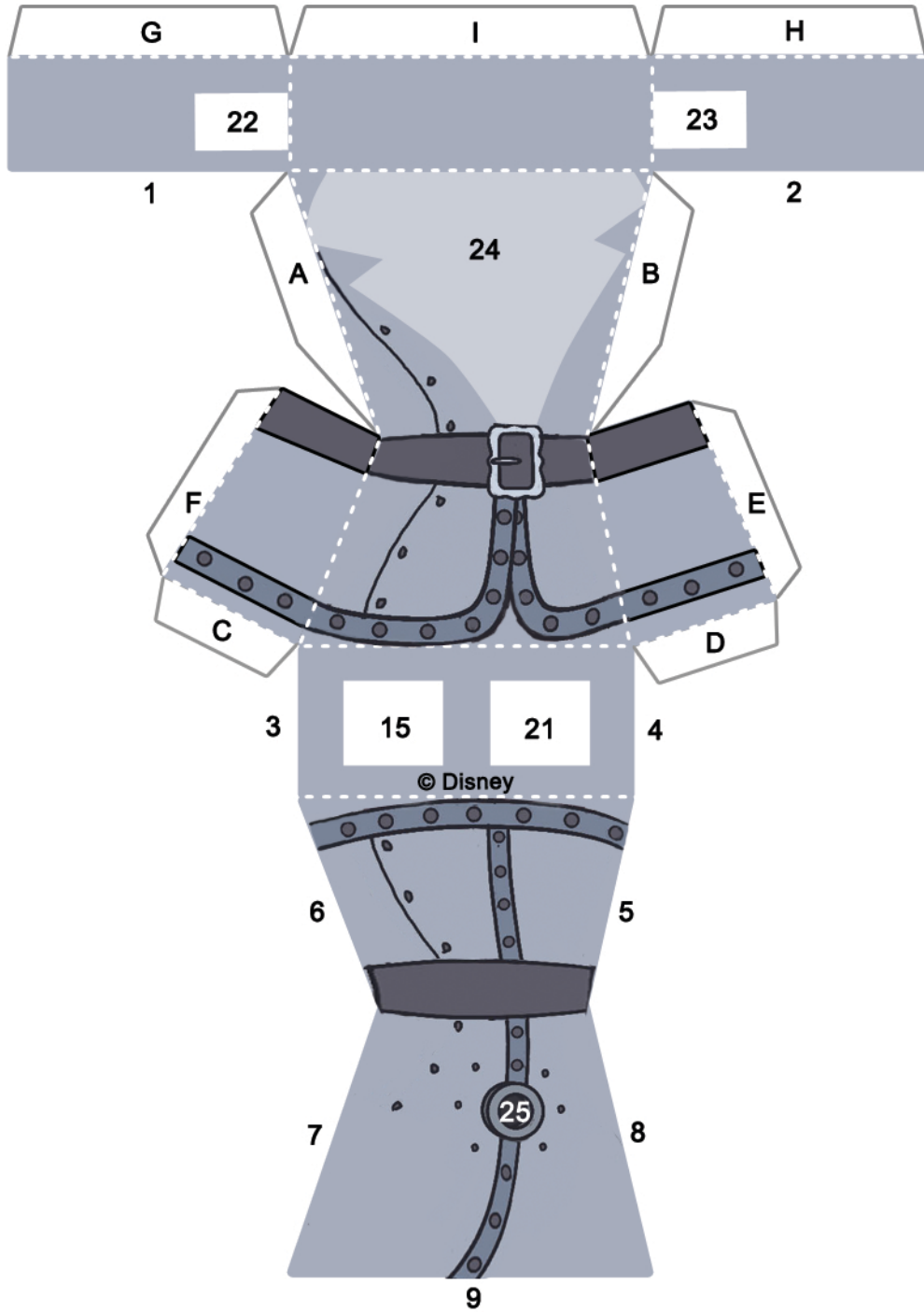
How to Make It

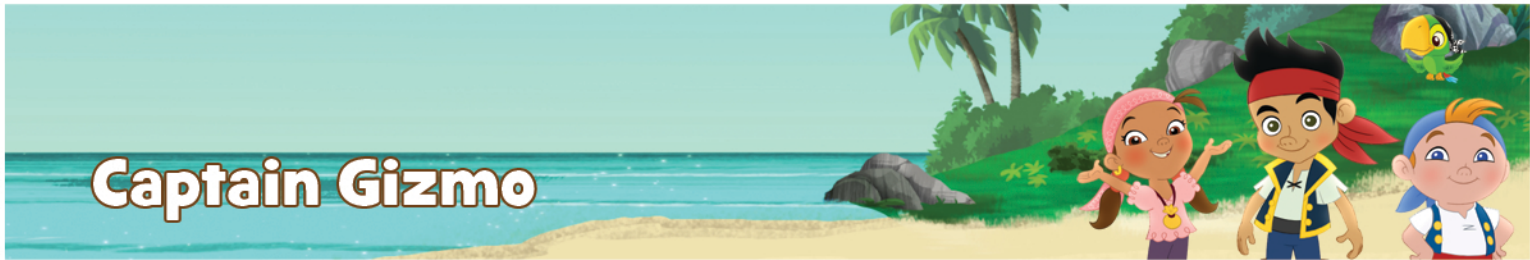
1. Print the pages on cardstock.
2. Have a grown-up cut out the pieces.
3. Score along the dashed lines. Optional: Use a ruler to ensure edges are straight.
4. Starting with the Body, glue Tab A to the underside of 1, Tab B to the underside of 2, C to 3, D to 4, E to 5, F to 6, G to 7, H to 8, and I to 9.
5. Continue with the legs by gluing Tab J to the underside of 10, Tab K to the underside of 11, L to 12, M to 13, N to 14, and O to 15. With the other leg, glue Tab P to the underside of 16, Tab Q to the underside of 17, R to 18, S to 19, T to 20, and U to 21.
6. With the legs finished, glue section 15 of the leg to section 15 on the body and glue section 21 of the other leg to section 21 on the body.
7. With the arms, glue Tab V to section 22 and Tab W to section 23.
8. Glue the Face/Chest to section 24 of the body.
9. Finish with the Turn Key by gluing Tab Y to section 25.

Captain Gizmo



Body





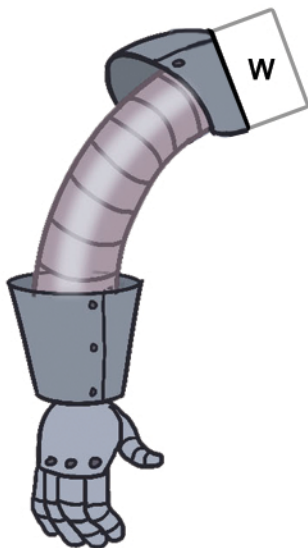
Captain Gizmo



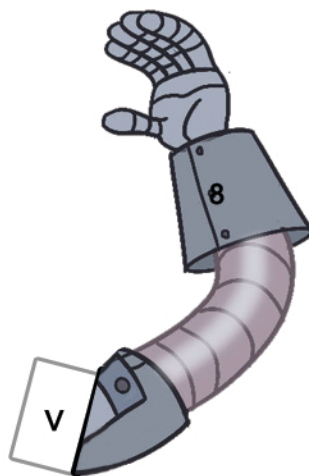
Face/Chest



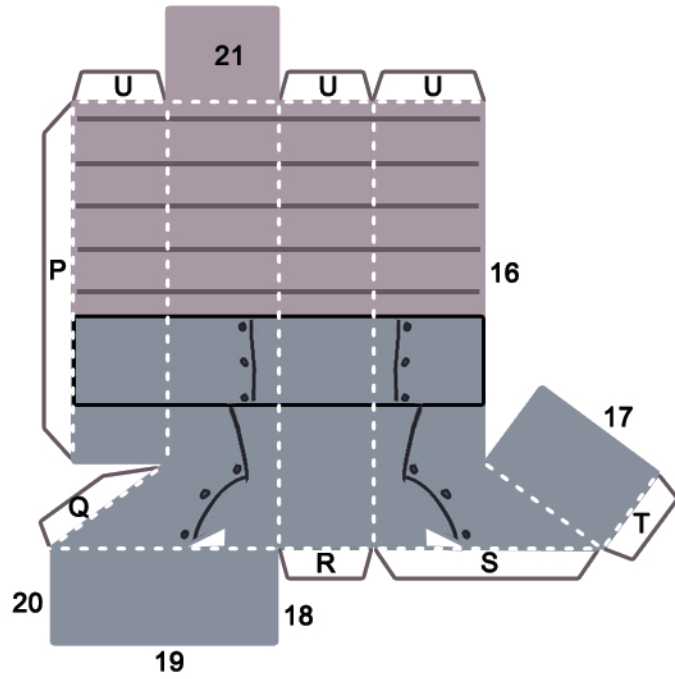
Turn Key



Arms



Captain Gizmo



Legs

