

HANGING BATTY BAT

MATERIALS

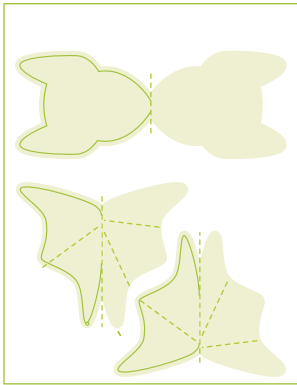
- 2 x A4 paper
- Scissors - intended for grown-up use only
- Glue
- Ruler
- Knife - intended for grown-ups use only
- String



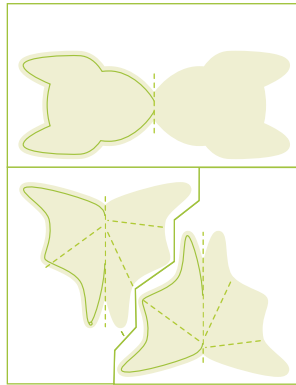
PRINTING AND ASSEMBLY INSTRUCTIONS

NOTE: Project assembly is intended for grown ups only.

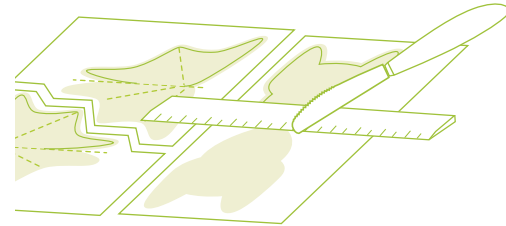
1 Print artwork and set aside to dry completely.



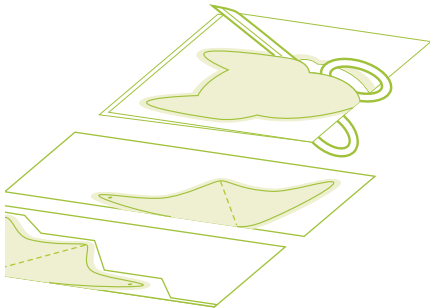
2 Cut around pieces to separate each.



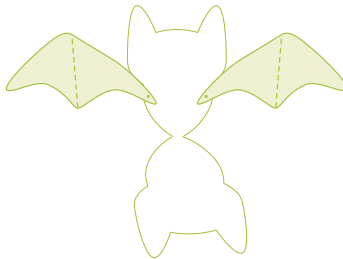
3 Score: Using a ruler as a guide, run the back of a knife along the dotted lines. Fold the head and wings in half with the artwork facing up.



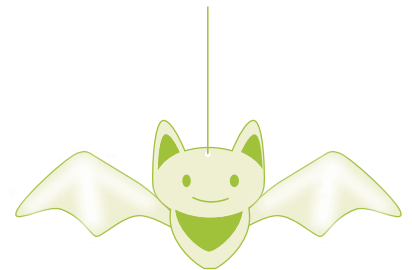
4 Cut out wings along the solid lines. Fold and glue the wings together. Cut out head piece along solid line.

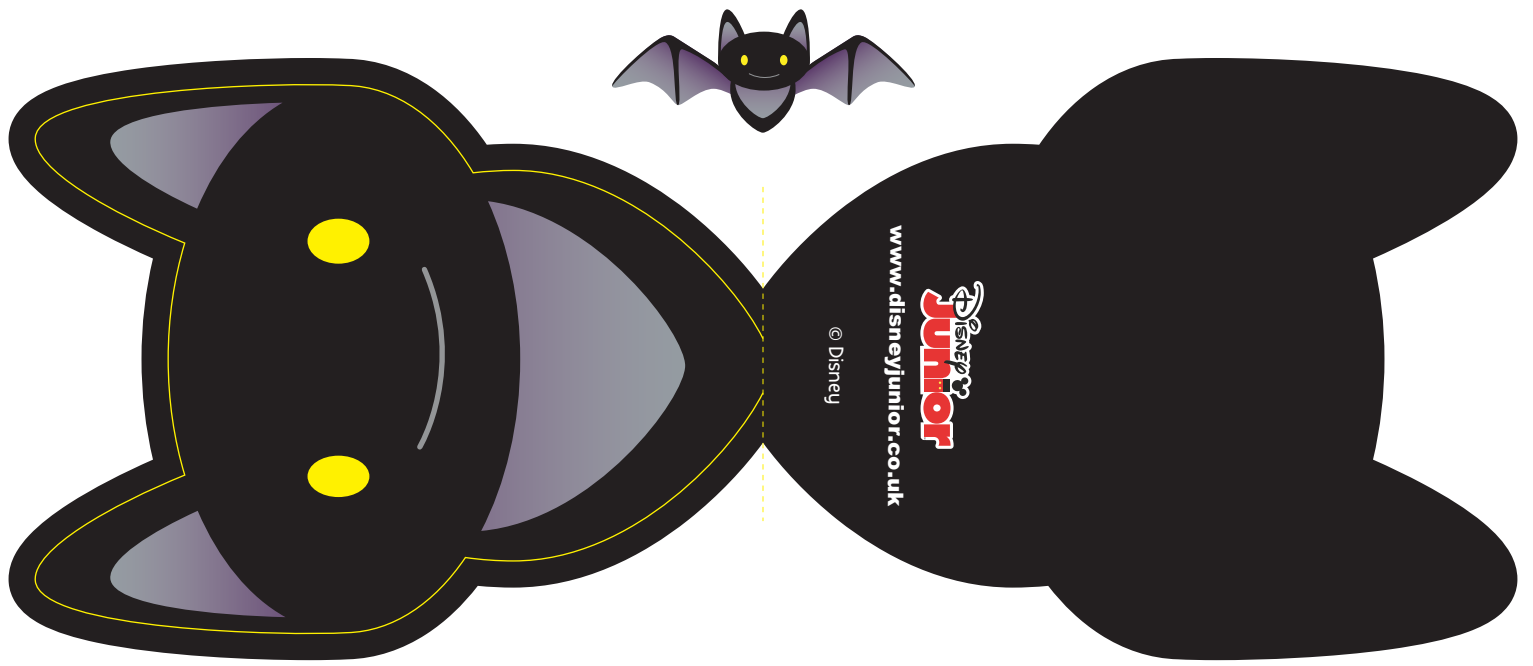


5 Place wing pieces (where marked with a yellow dot) in between either side of head piece and glue head together.



6 Punch a hole in the top of head and hang with string.





© Disney
www.disneyjunior.co.uk

