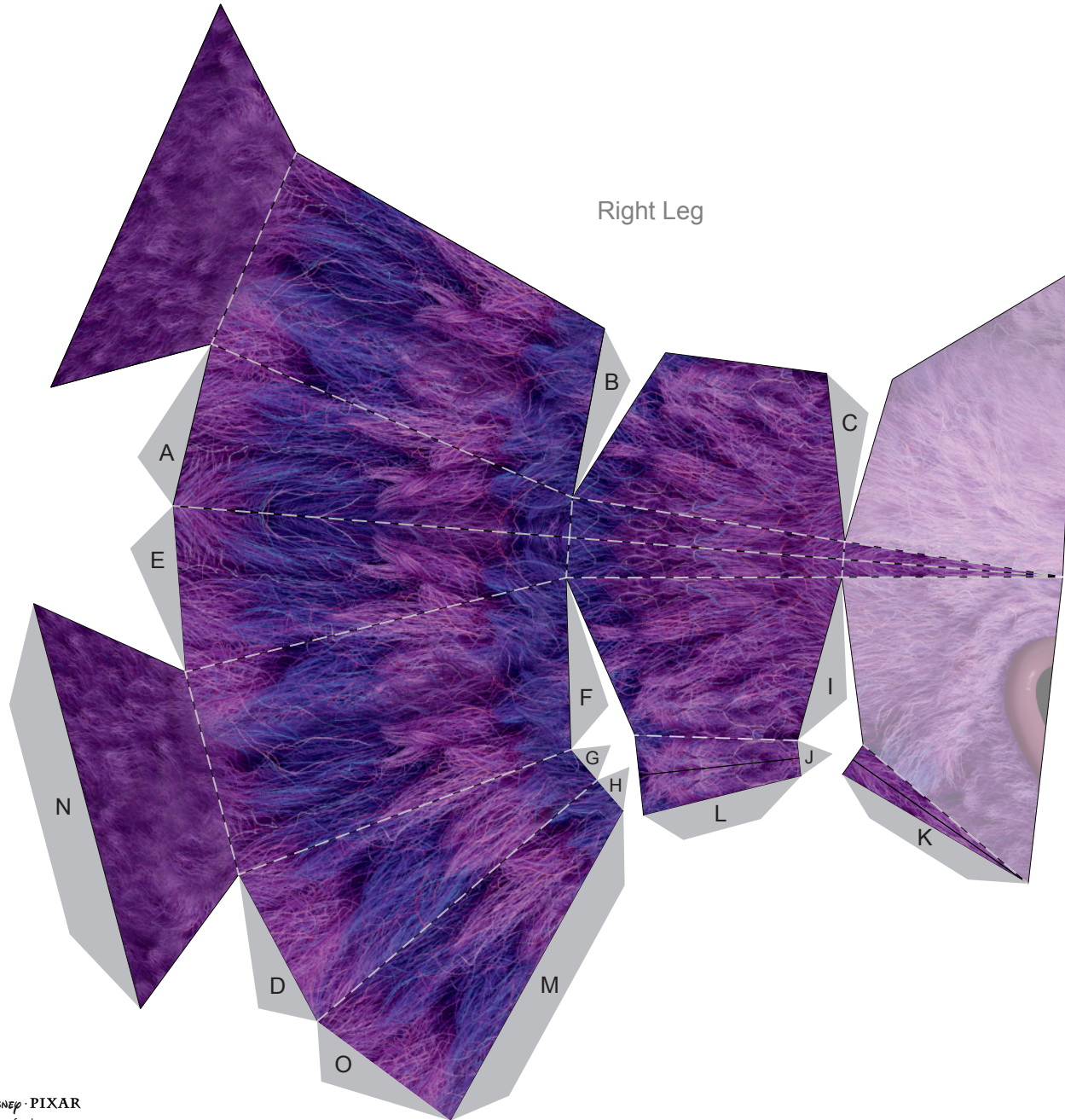


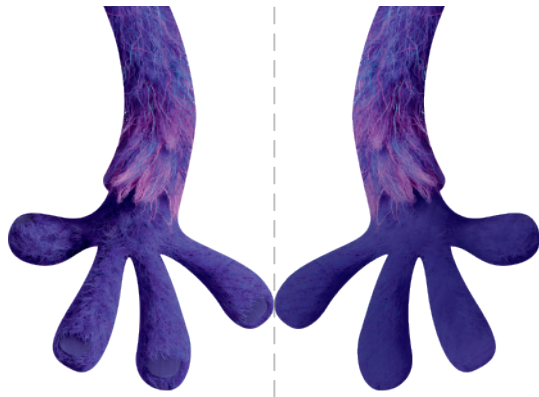
Right Leg



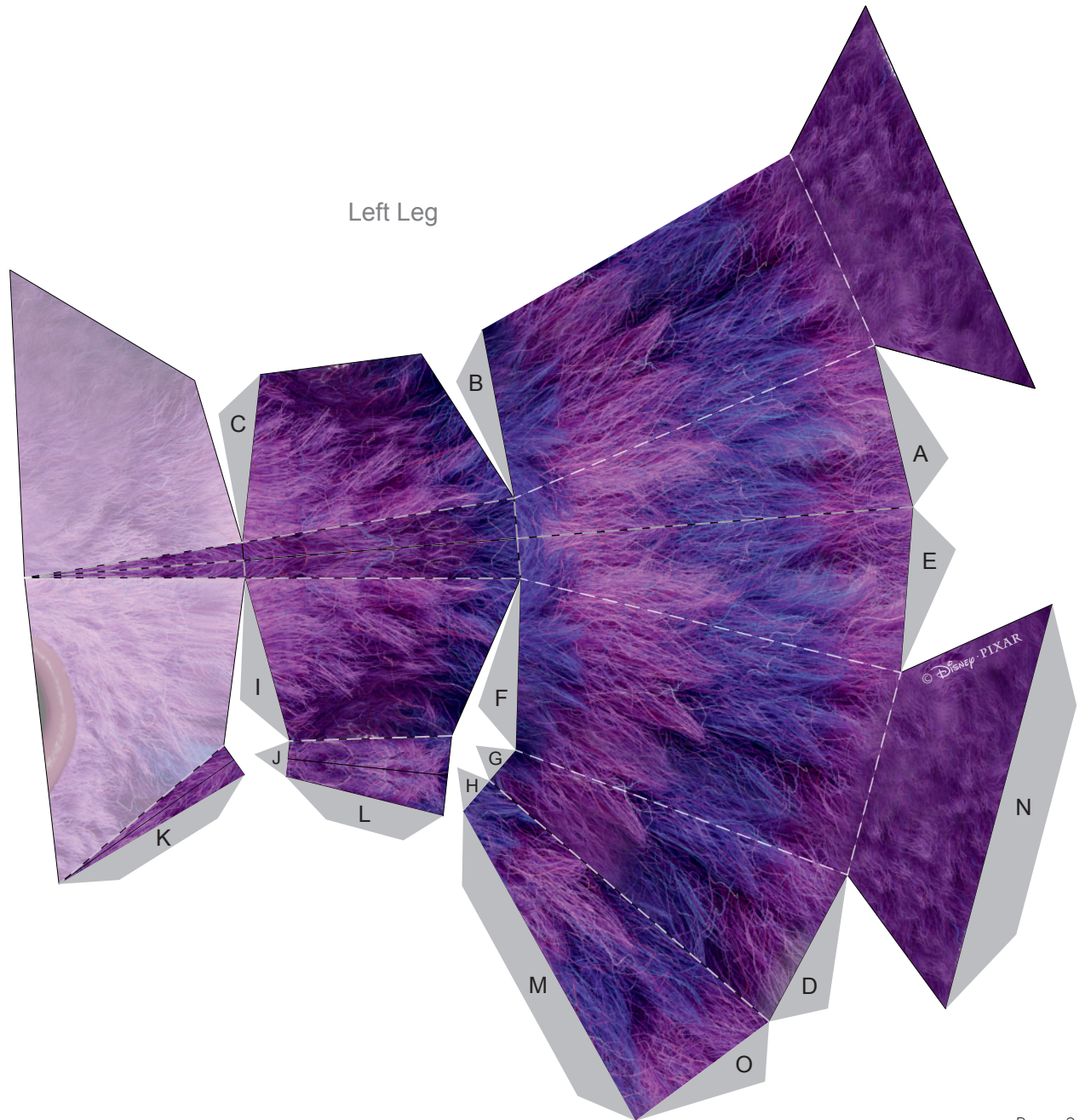
Right Arm



Left Arm



Left Leg





1. Print the template on regular paper or cardstock and cut out the pieces.
2. Starting with the Right Leg, make folds along all dashed lines away from you. Using glue or double-sided tape, secure the A tab to the back of the panel next to it. Continue this pattern with the remaining tabs in alphabetical order. Complete the shape with the O tab. Repeat for the Left Leg.
3. Using glue or double-sided tape, attach the left side of Art's face to the left leg and the right side of his face to the right leg. Flip him over and do the same for the back of his head.
4. Fold each arm in half along the center dashed line and secure so the design is two-sided. Using glue or double-sided tape, secure each arm to the front of Art's head, near the bottom edge.

Front of Head



Back of Head

