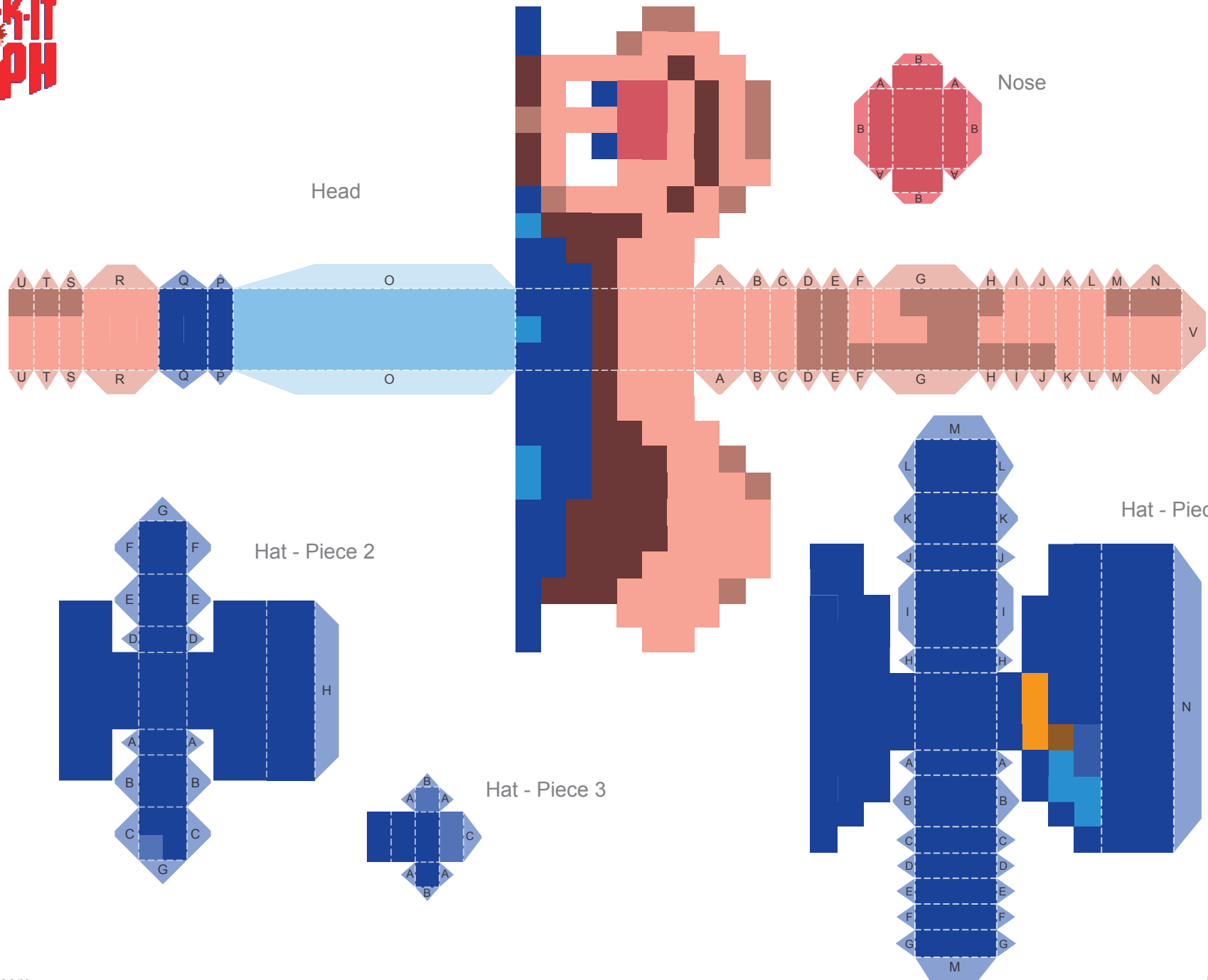




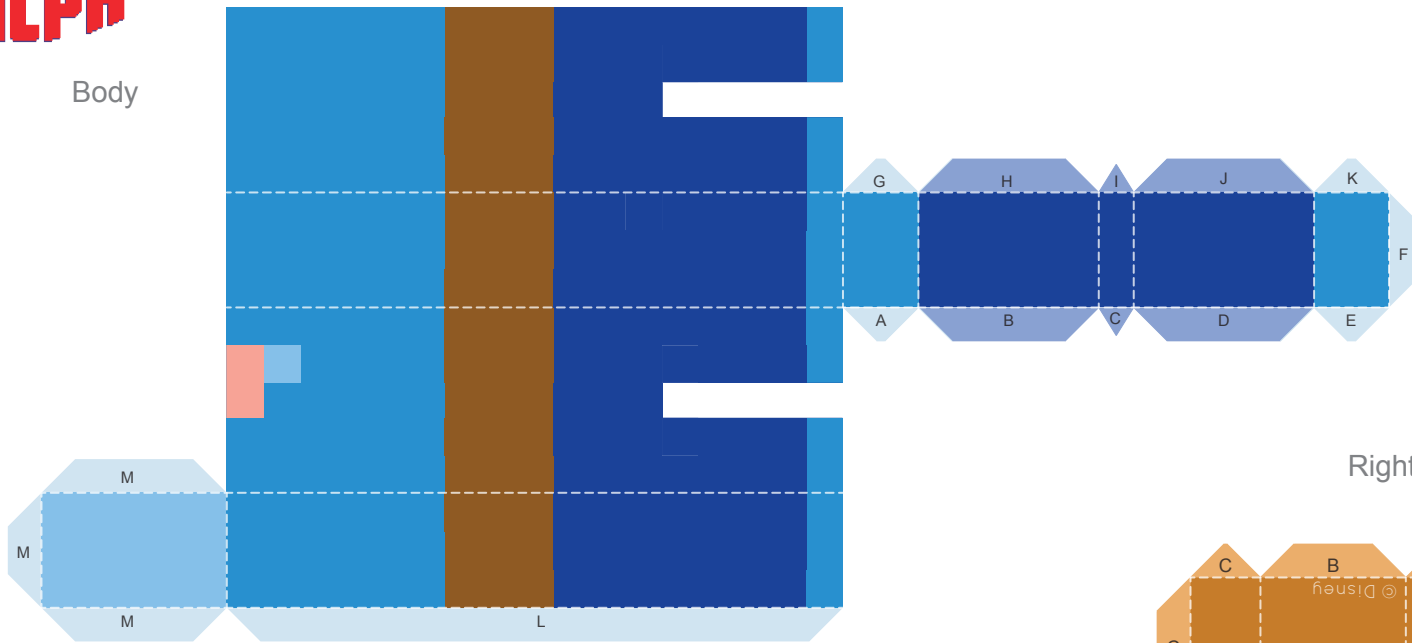
8-bit Fix-It Felix, Jr. 3D Papercraft



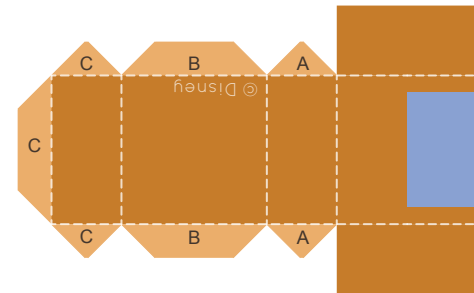


8-bit Fix-It Felix, Jr. 3D Papercraft

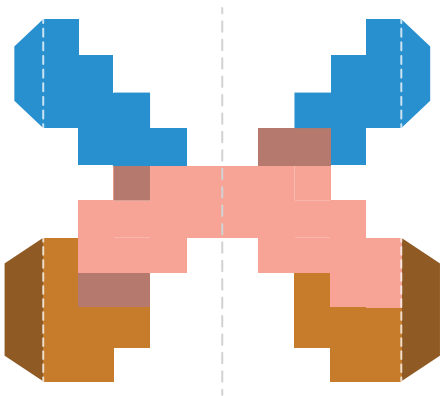
Body



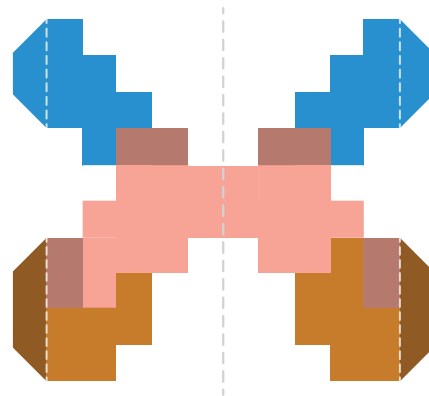
Right Shoe



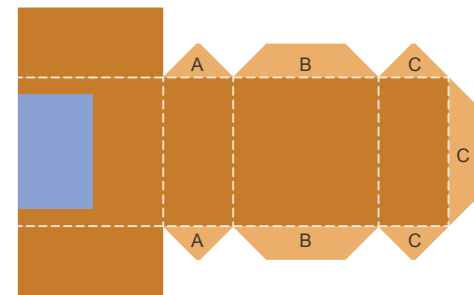
Right Arm



Left Arm



Left Shoe





8-bit Fix-It Felix, Jr. 3D Papercraft

Instructions

1. Print the template on regular paper or cardstock and cut out the pieces. Make folds along all dashed lines.
2. Using glue or double-sided tape, secure all tabs on the body to their corresponding panels in alphabetical order. Complete the shape of the body with the M tabs.
3. Secure all tabs on the head to their corresponding panels in alphabetical order, following the contour of the face. Complete the shape of the head with the V tab.
4. Secure the A tabs on the nose to their corresponding panels. Use the remaining B tabs to attach the nose to the face.
5. Secure all tabs on Hat Piece 1 to their corresponding panels in alphabetical order. Repeat this step with Hat Piece 2 and Hat Piece 3. Find the shape on Hat Piece 1 that matches the shape of Hat Piece 2 and attach the two pieces. Attach Hat Piece 3 to Hat Piece 1, just to the left of Hat Piece 2.
6. Attach the the hat to the head, then attach the head to the body.
7. Secure all tabs on the shoes in alphabetical order. Attach each shoe to the bottom of the leg where indicated on the shoe.
8. Fold each arm in half along the center dashed line and secure so the design is two-sided. Butterfly the tabs outward and use them to attach the arms to the sides of the body.