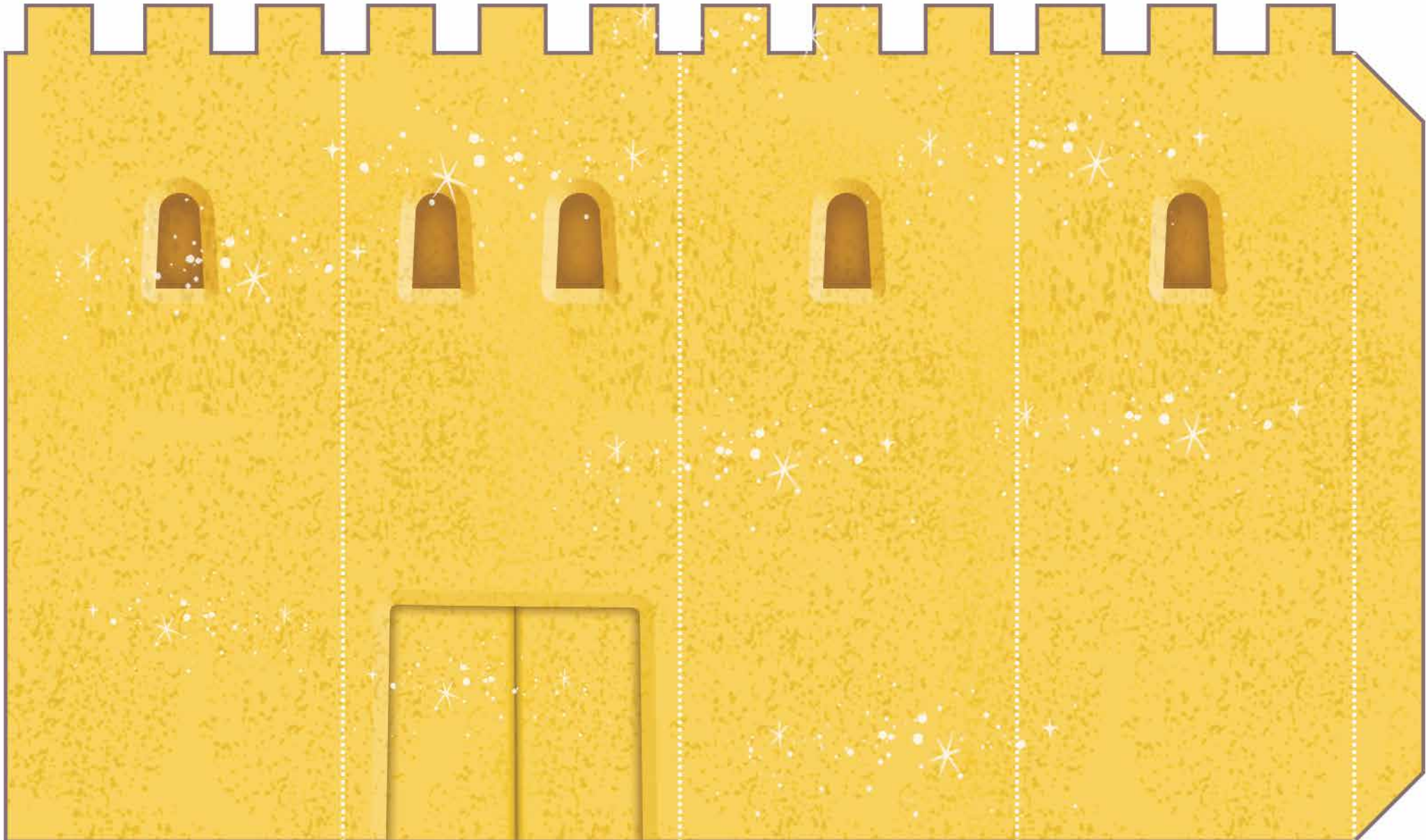




Sand Castle Playset

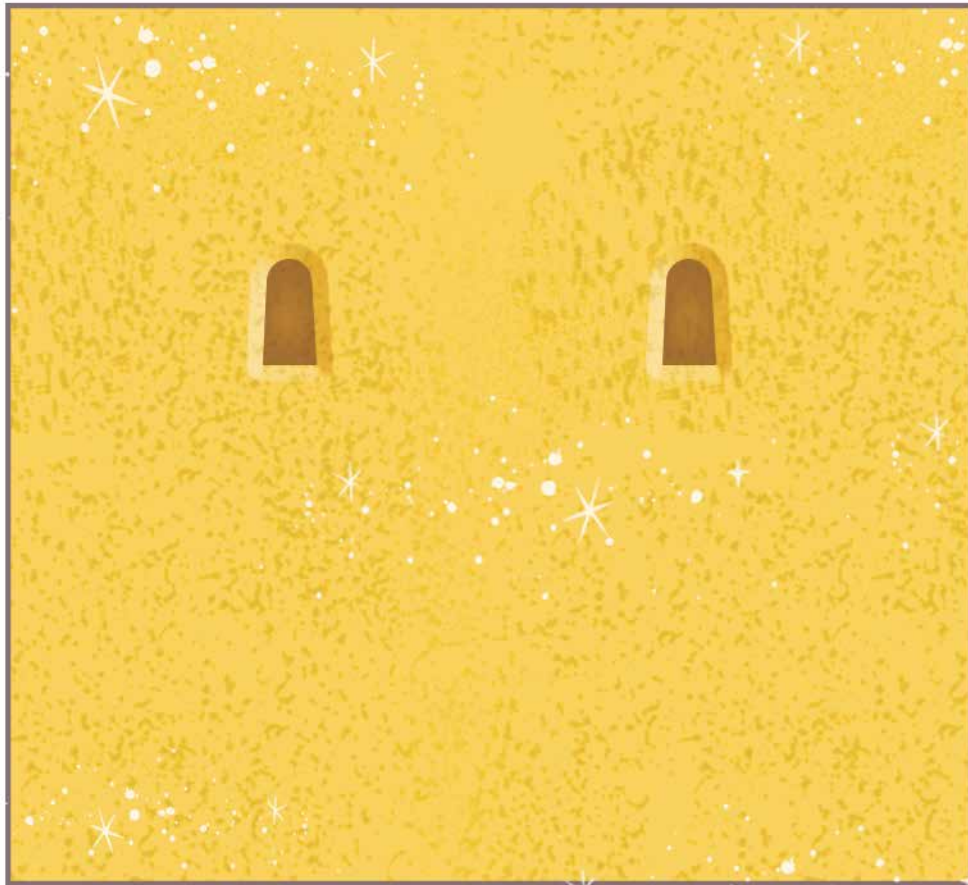
Square Tower



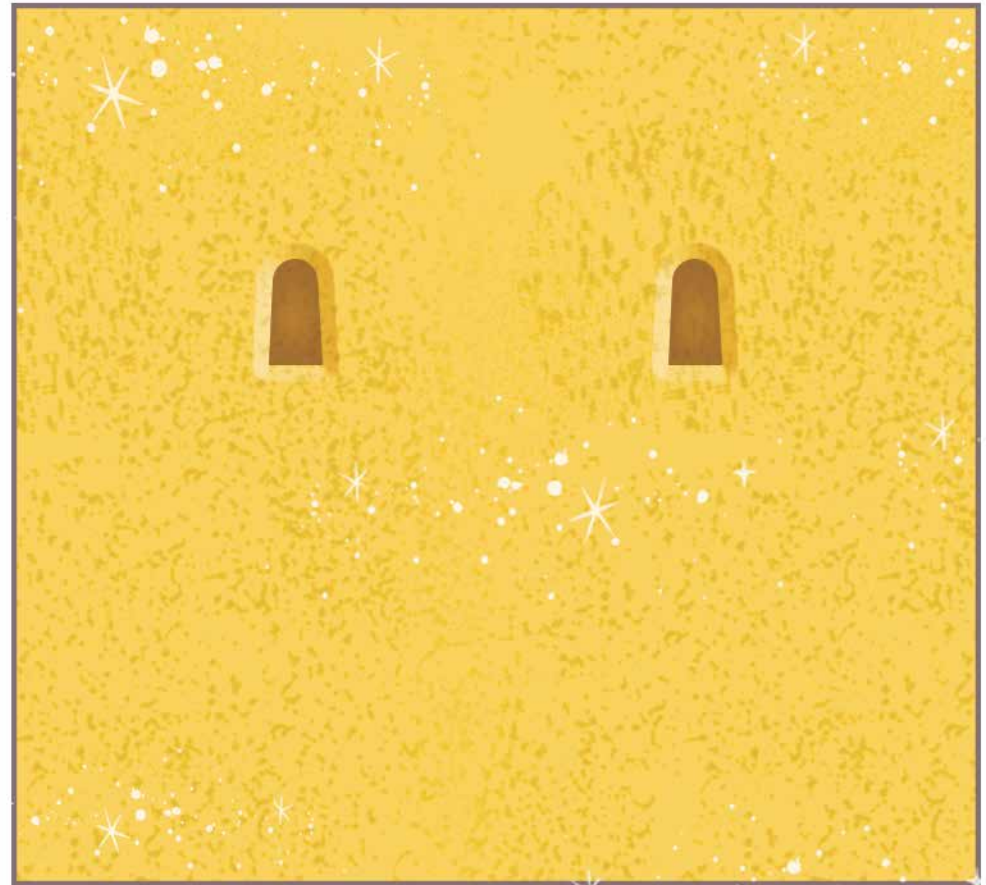


Sand Castle Playset

Round Towers



—
Cut Along
Line

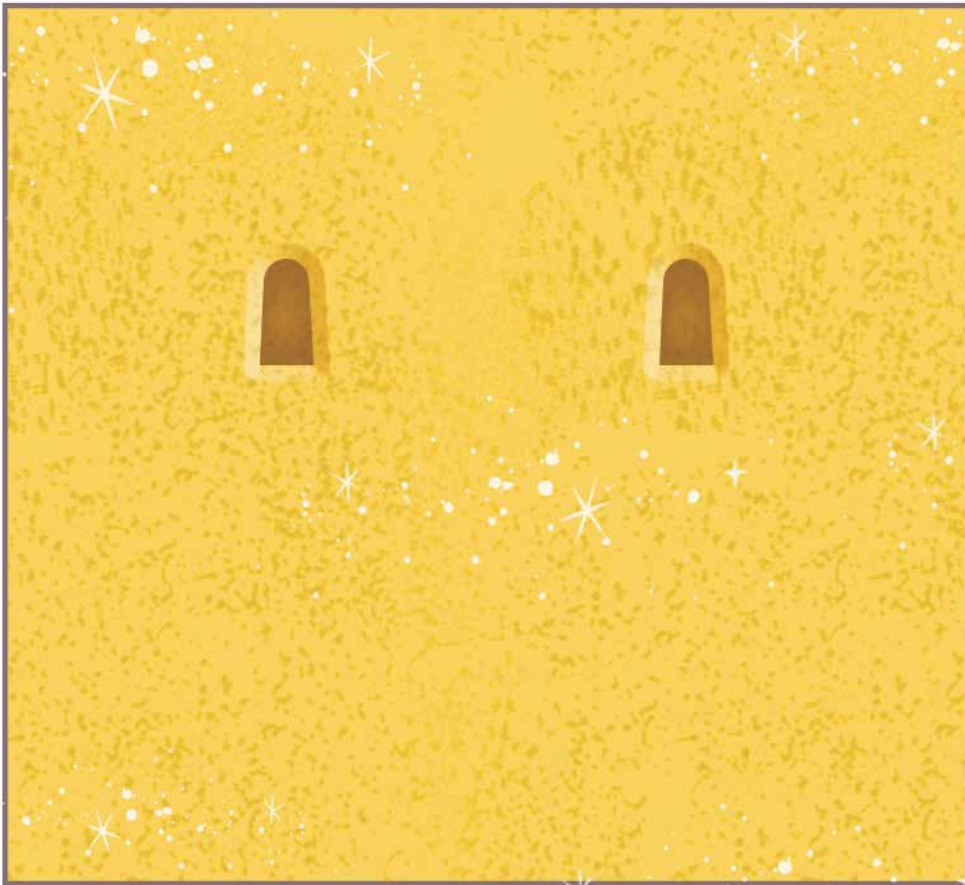


—
Cut Along
Line

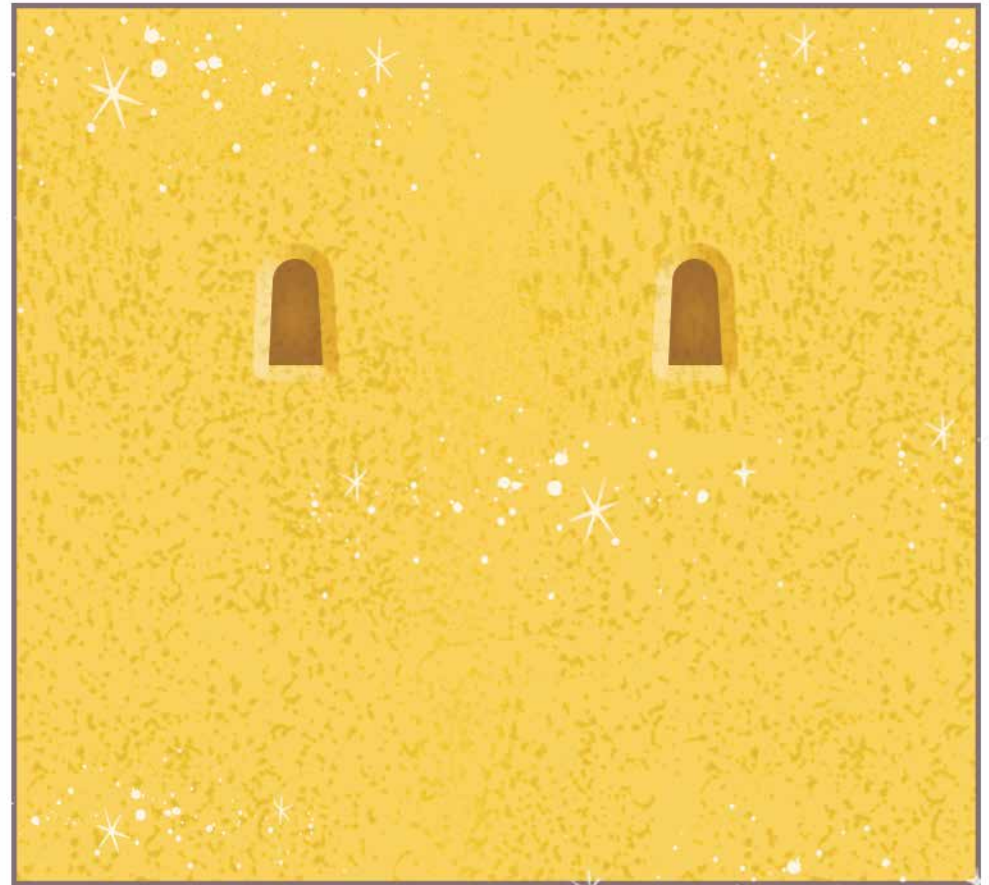


Sand Castle Playset

Round Towers



—
Cut Along
Line

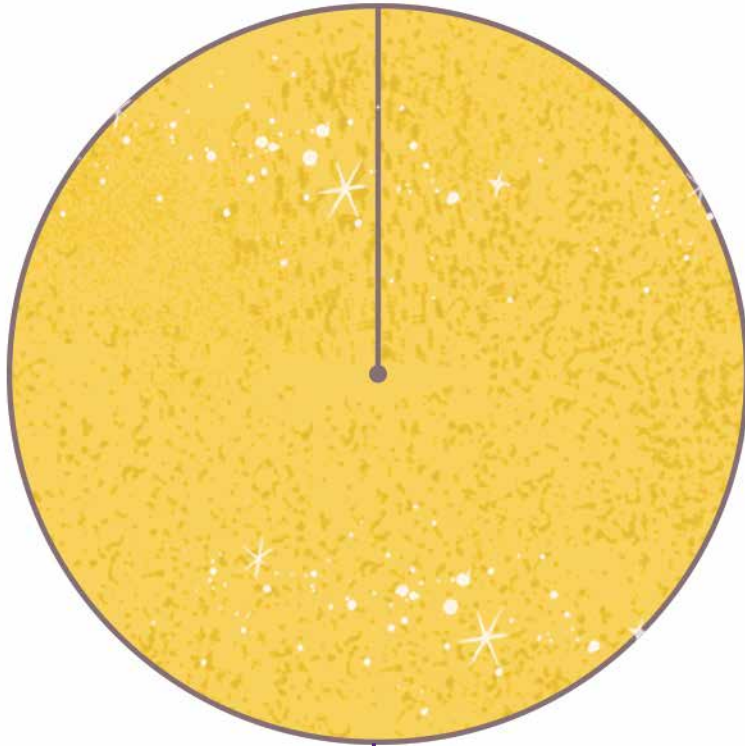


—
Cut Along
Line

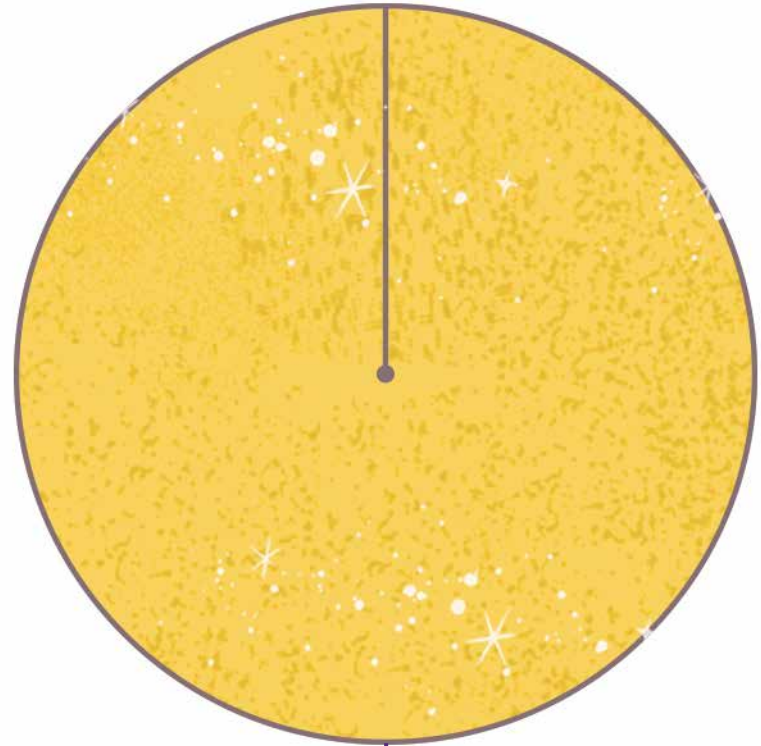


Sand Castle Playset

Round Tower Roofs



Cut Along
Line

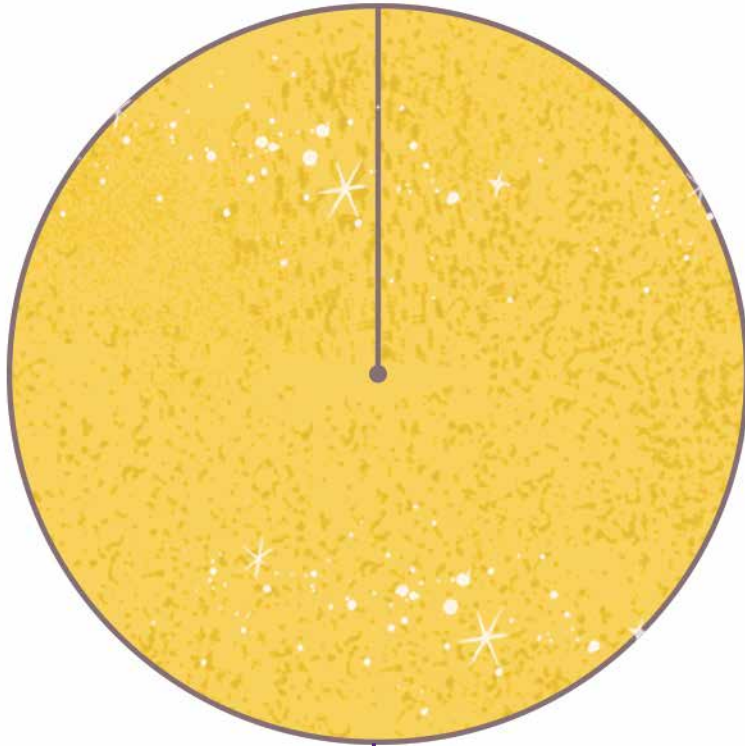


Cut Along
Line

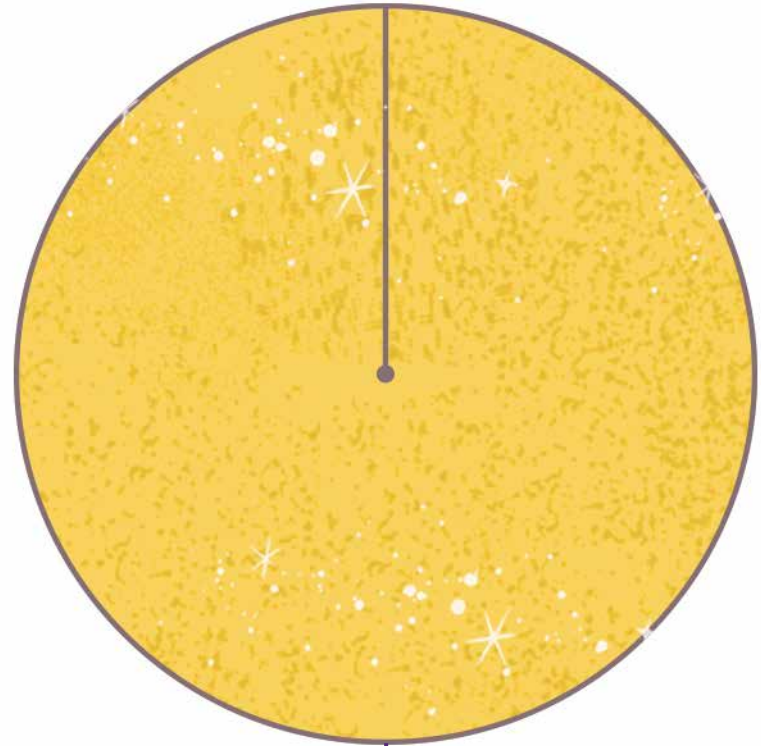


Sand Castle Playset

Round Tower Roofs



Cut Along
Line



Cut Along
Line

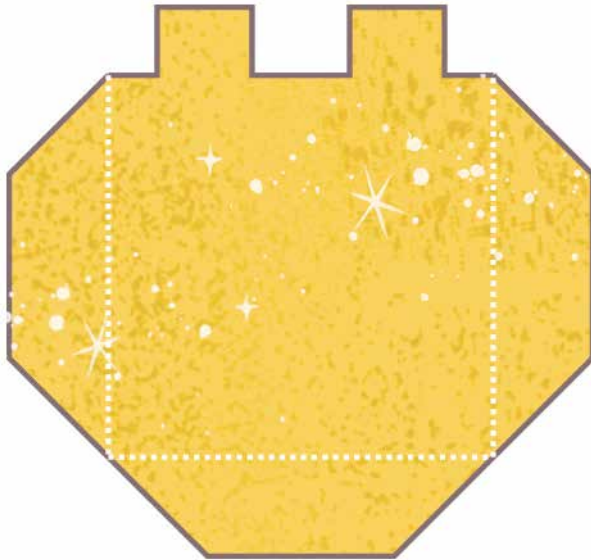


Sand Castle Playset

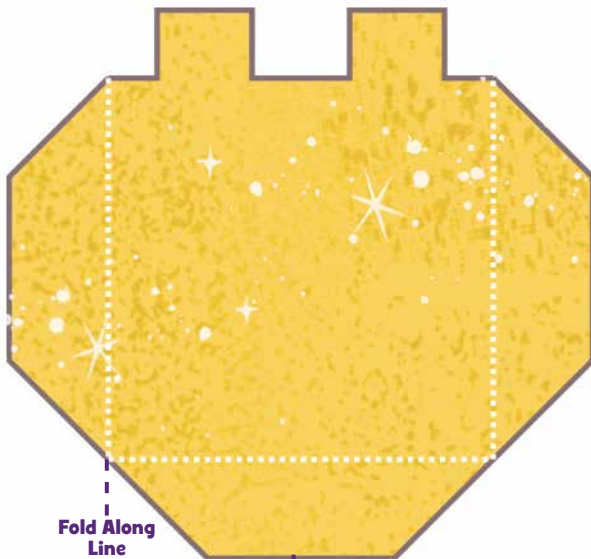
Front Walls / Square Tower Roof



Front Right Wall



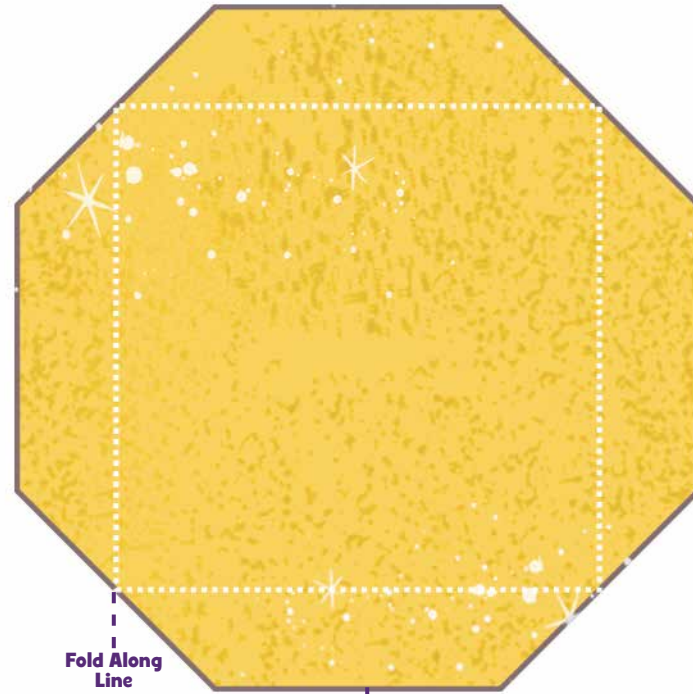
Front Left Wall



Fold Along Line

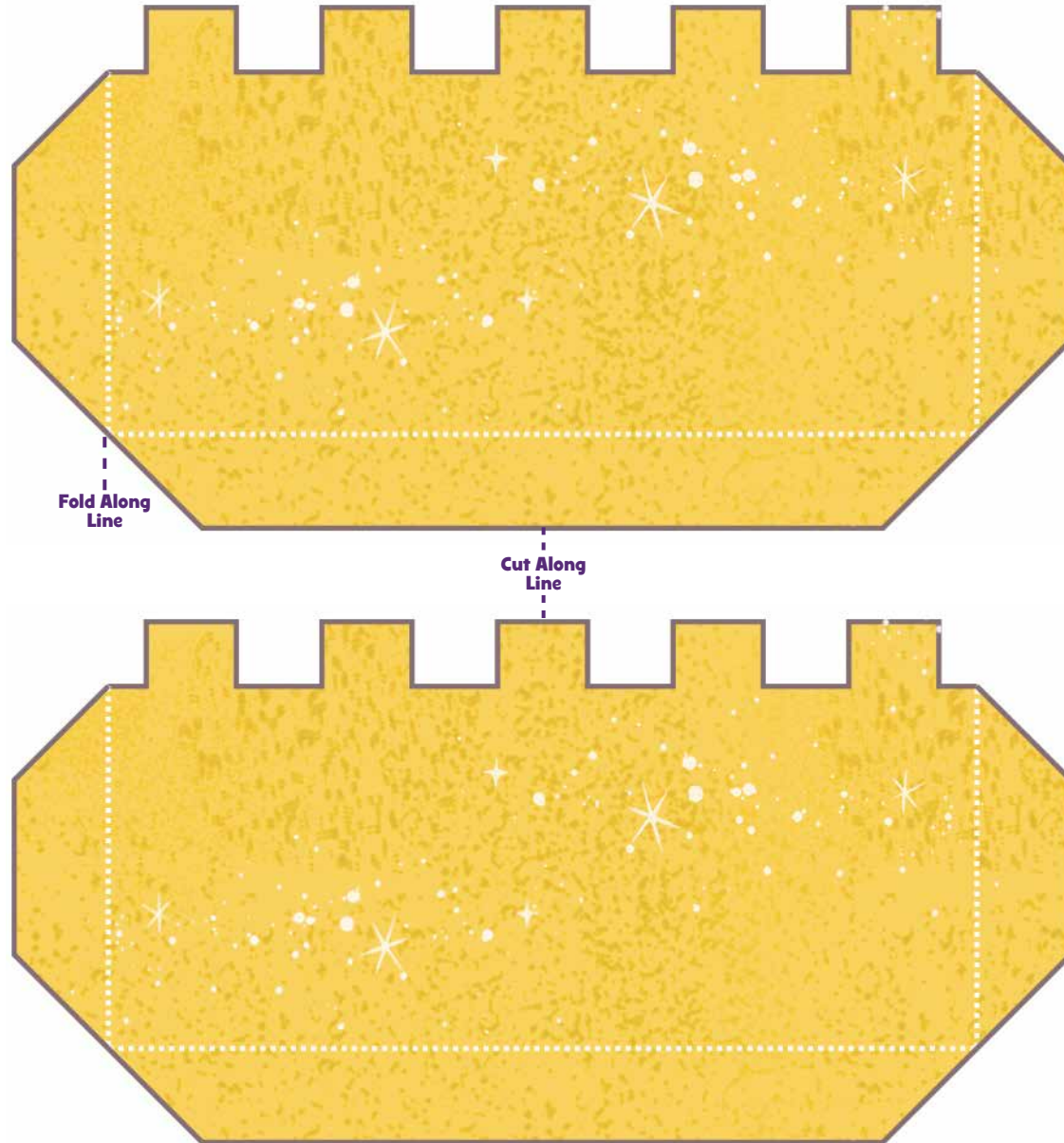
Cut Along Line

Square Roof



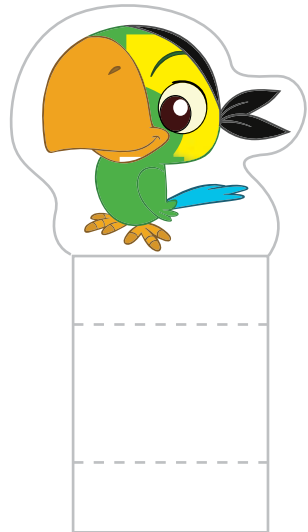
Fold Along Line

Cut Along Line



Fold Along Line

Cut Along Line



Cut Along Line

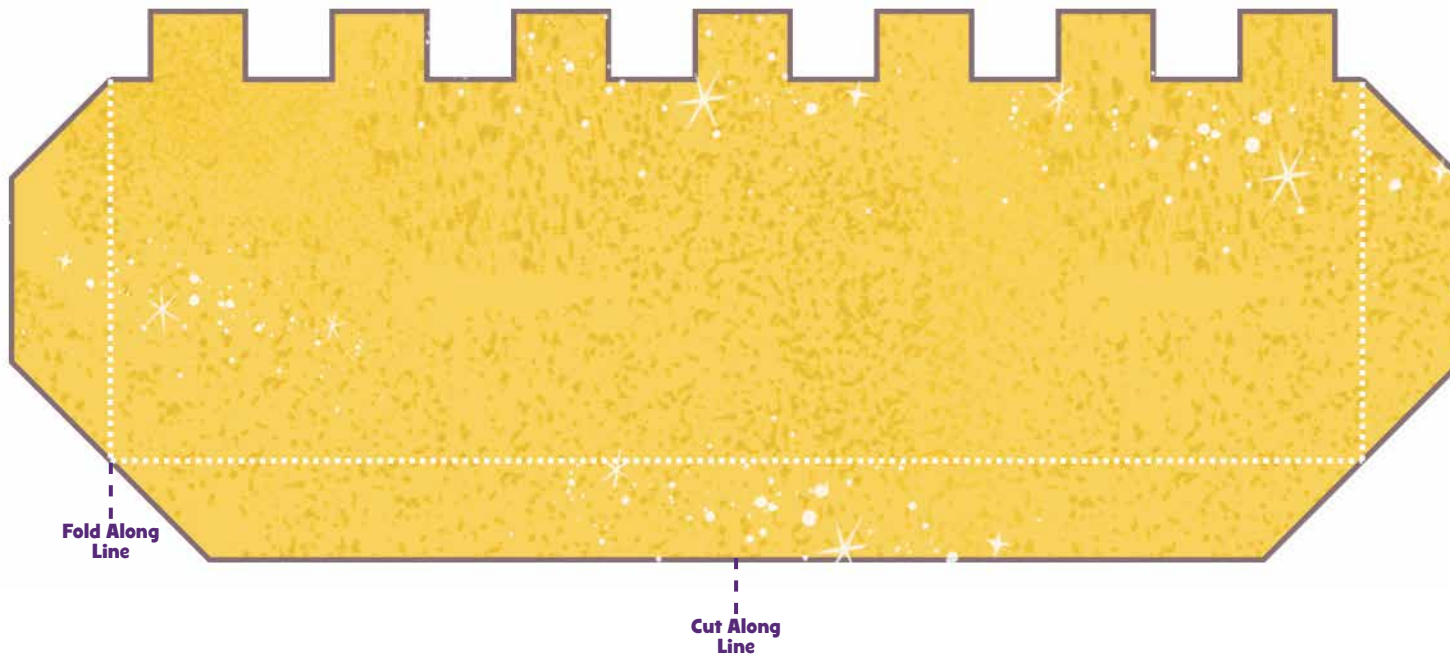


Cut Along Line



Sand Castle Playset

Back Wall





Sand Castle Playset



Castle Instructions

You will need a color printer, cutting tools and glue (or tape).
Cutting is intended for grown ups only.

1. Print out all the pages of the castle.
2. Cut along the gray outlines, and fold on the white dashed lines.
3. Assemble the square tower, and attach the front side walls to either side. Attach the square tower roof to the inside of the tower.
4. Assemble the four round towers, and attach the cone shaped roofs.
5. Attach two round towers to the remaining tabs of the front wall pieces, and attach the other two round towers to the tabs on the back wall piece.
6. Attach the remaining side walls to the round towers at the ends of the front and back walls to complete the castle.

Character Instructions

1. Cut along the gray outlines, and fold on the gray dashed lines.
2. Make the indicated folds away from you, then attach the smaller rectangles to the back of the large middle rectangle.
3. Fold the character toward you and stand him or her up.

