

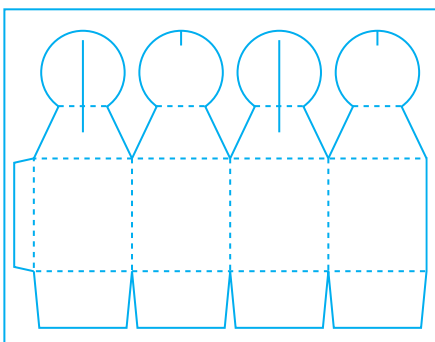


MATERIALS

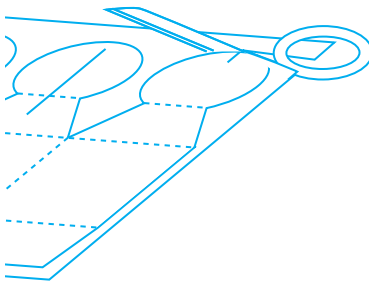
- Scissors or cutting tool
- Multi-purpose glue
- Butter knife
- Metal-edged ruler
- Cutting mat (optional)

INSTRUCTIONS **NOTE:** Project assembly is intended for grown-ups only.

1 Print out page. Allow to dry.



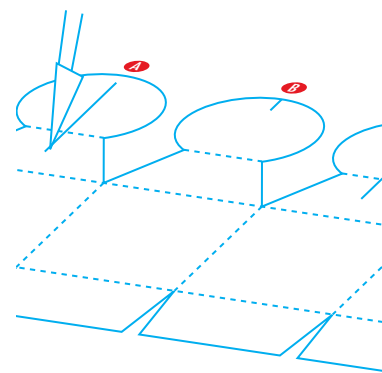
2 Using scissors or cutting tool and mat, cut out the four ornament sides on the solid lines.



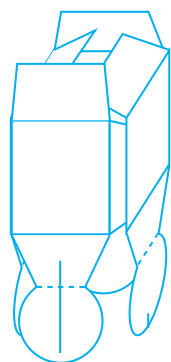
3 Using a ruler as a guide, run the backside of a butter knife firmly along dotted lines.



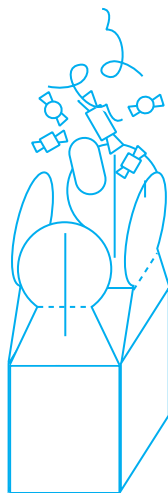
4 Cut slits into circle pieces A–D as indicated by the solid lines.



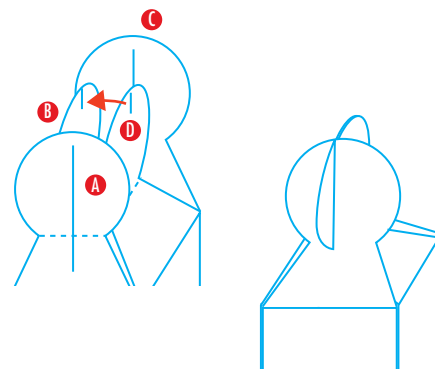
5 Fold all flaps down and inward to form the box shape. Turn upside down to glue tabs together to seal bottom of box.



6 Fill box with small gifts or treats.



7 Close box by taking the B and D circles and pressing them together at the center of the box's top. Next, slide circles A and C through B and D until A and C meet as well. Cinch all four circles together by pressing A and C into the short slits of B and D.



A



A

B



B

C



C

D



D

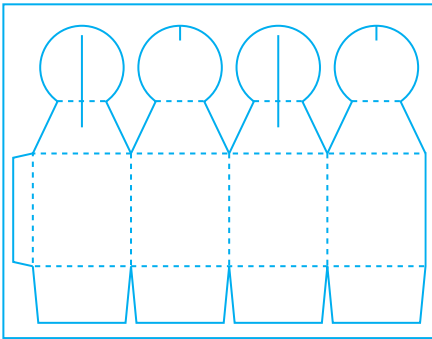


MATERIALS

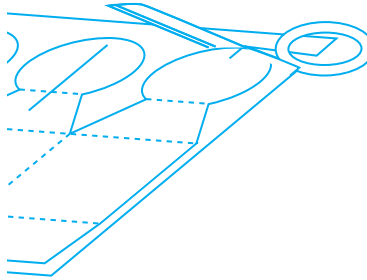
- Scissors or cutting tool
- Multi-purpose glue
- Butter knife
- Metal-edged ruler
- Cutting mat (optional)

INSTRUCTIONS **NOTE:** Project assembly is intended for grown-ups only.

1 Print out page. Allow to dry.



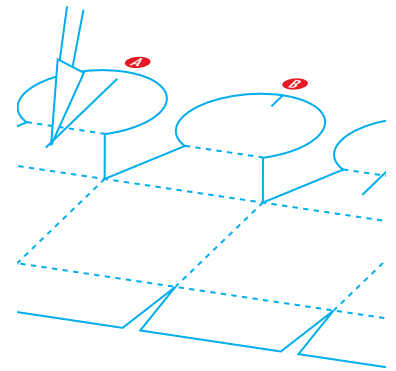
2 Using scissors or cutting tool and mat, cut out the four ornament sides on the solid lines.



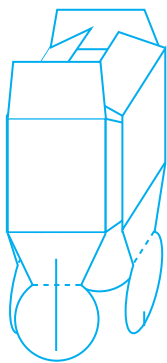
3 Using a ruler as a guide, run the backside of a butter knife firmly along dotted lines.



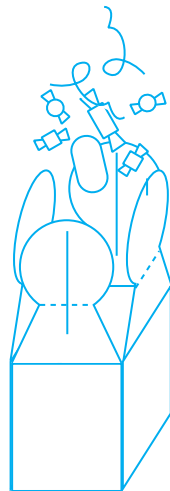
4 Cut slits into circle pieces A–D as indicated by the solid lines.



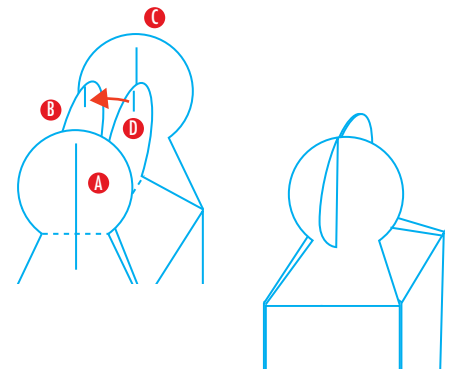
5 Fold all flaps down and inward to form the box shape. Turn upside down to glue tabs together to seal bottom of box.



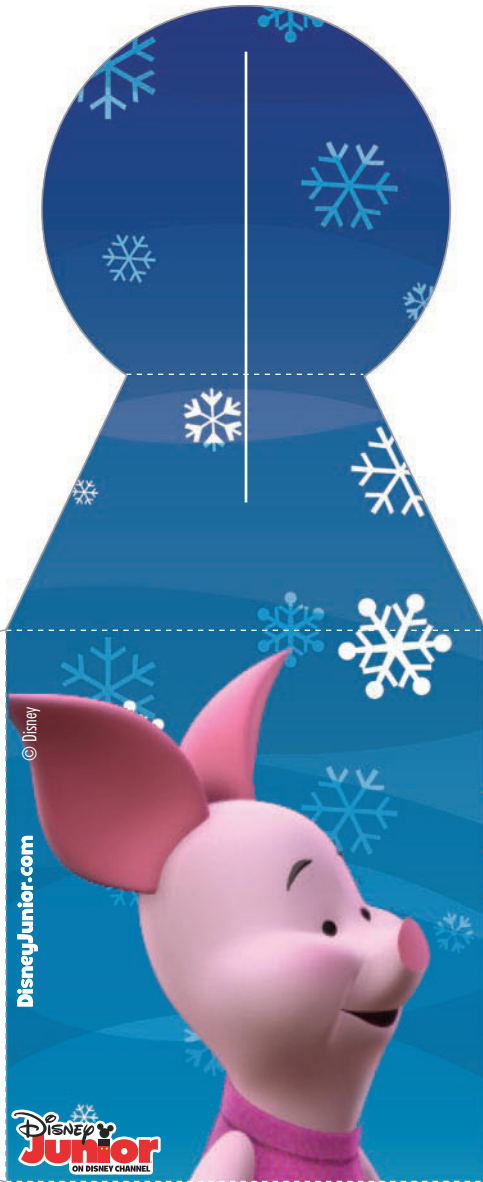
6 Fill box with small gifts or treats.



7 Close box by taking the B and D circles and pressing them together at the center of the box's top. Next, slide circles A and C through B and D until A and C meet as well. Cinch all four circles together by pressing A and C into the short slits of B and D.



A



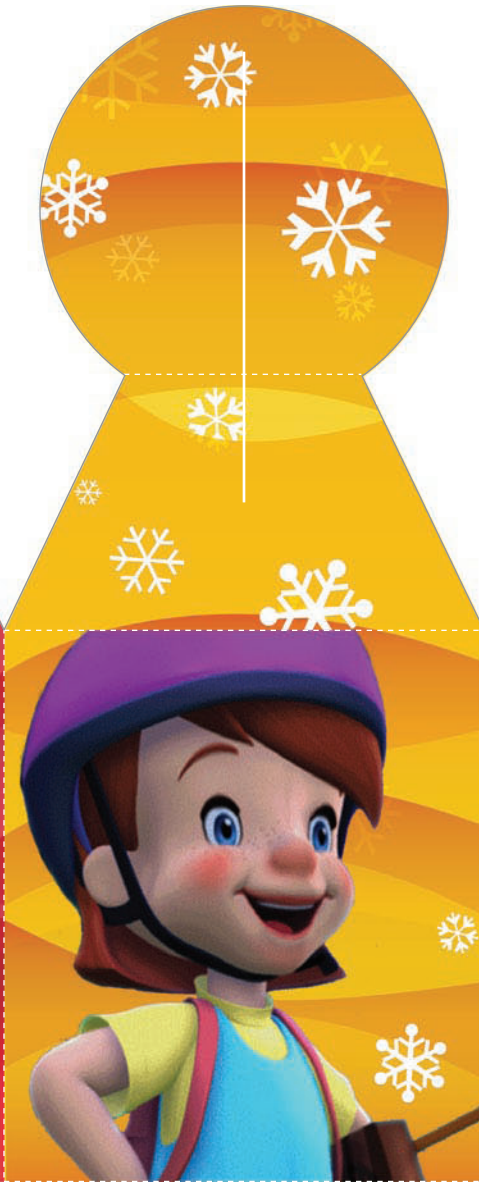
A

B



B

C



C

D



D

© Disney
DisneyJunior.com

Disney
Junior
ON DISNEY CHANNEL



Holiday Gift Box



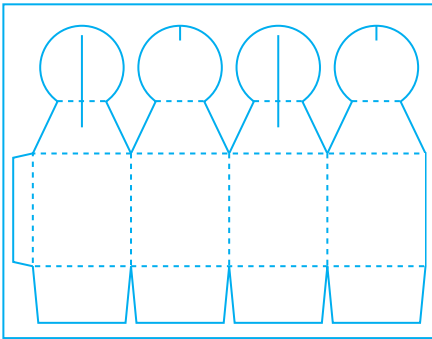
MATERIALS

- Scissors or cutting tool
- Multi-purpose glue
- Butter knife
- Metal-edged ruler
- Cutting mat (optional)

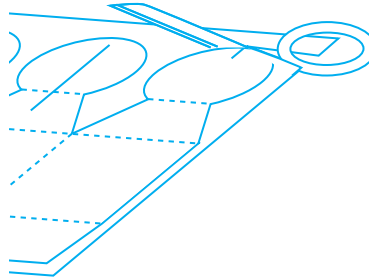
INSTRUCTIONS

NOTE: Project assembly is intended for grown-ups only.

- 1 Print out page. Allow to dry.



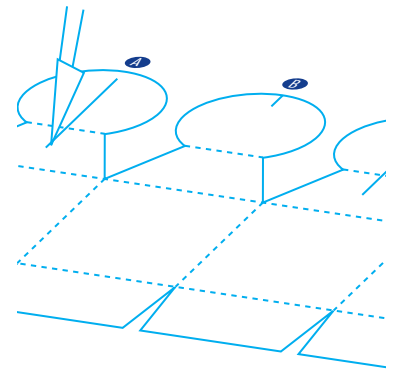
- 2 Using scissors or cutting tool and mat, cut out the four ornament sides on the solid lines.



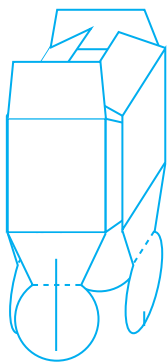
- 3 Using a ruler as a guide, run the backside of a butter knife along all dotted lines.



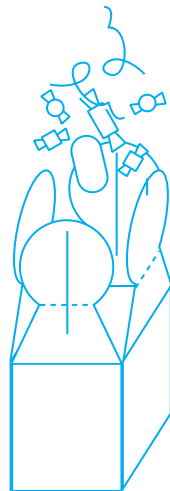
- 4 Cut slits into circle pieces A–D as indicated by the solid lines.



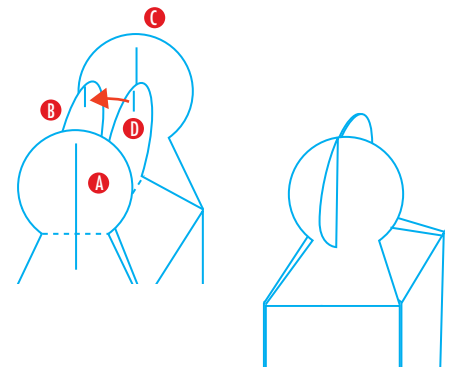
- 5 Fold all flaps down and inward to form the box shape. Turn upside down to glue tabs together to seal bottom of box.



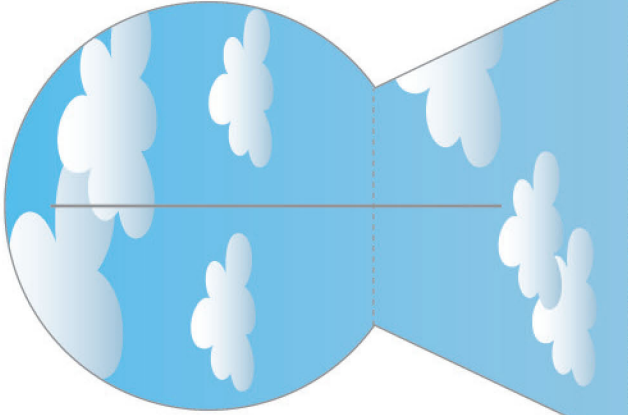
- 6 Fill box with small gifts or treats.



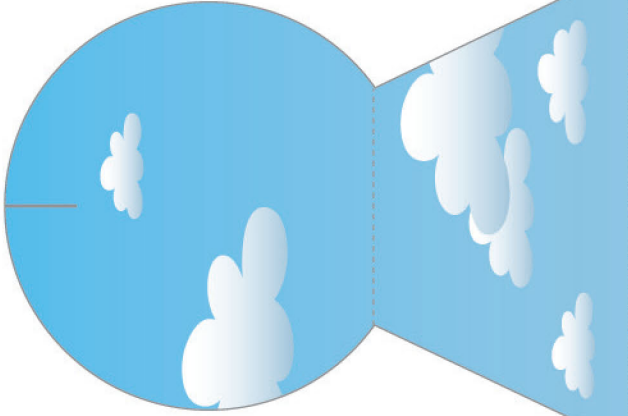
- 7 Close box by taking the B and D circles and pressing them together at the center of the box's top. Next, slide circles A and C through B and D until A and C meet as well. Cinch all four circles together by pressing A and C into the short slits of B and D.



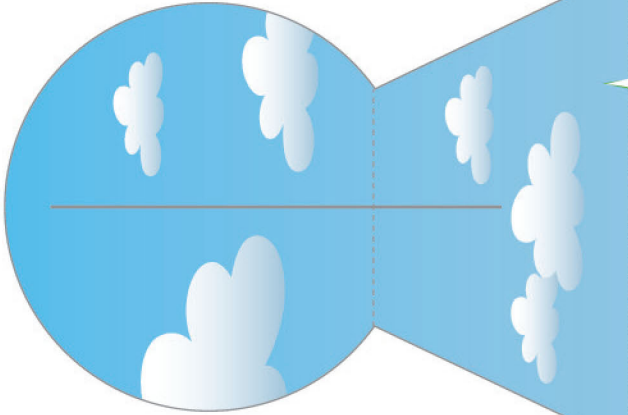
A



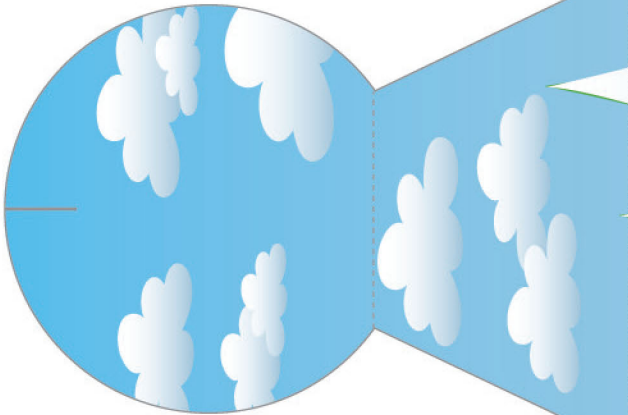
B



C



D



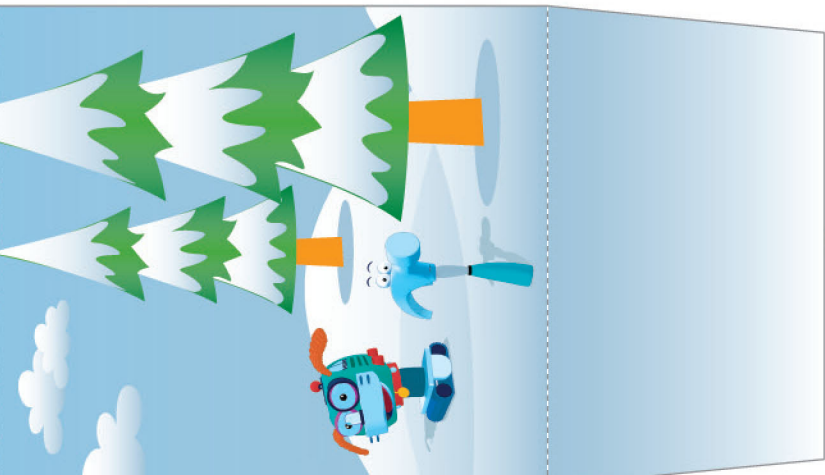
A



B



C



D

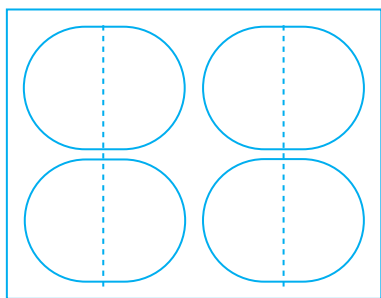


MATERIALS

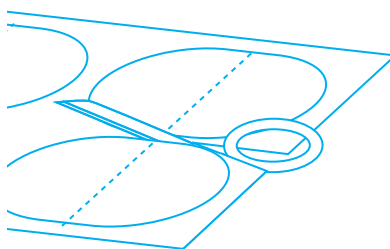
- Scissors or cutting tool
- Multi-purpose glue
- Thread, string, or ribbon (optional)
- Needle or hole punch (optional)
- Cutting mat (optional)

INSTRUCTIONS **NOTE:** Project assembly is intended for grown-ups only.

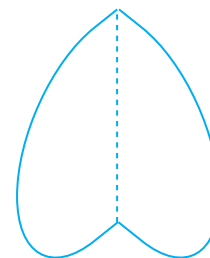
- 1** Print out page or pages, depending on how many ornaments you intend to make. Allow to dry.



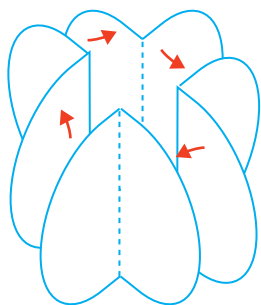
- 2** Using scissors or cutting tool, cut out the four ornament sides on the solid lines.



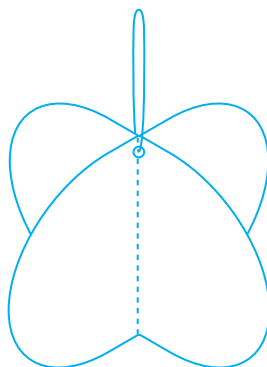
- 3** Fold the sides along the dotted lines, so that each is bent into a 90-degree angle.



- 4** Apply glue to back of sides and glue them together as shown. Allow to dry.



- 5** Either place your ornaments on tree branches or mantelpiece, or—using either a needle and thread or hole-punch and ribbon—pierce the top of the ornament and tie it to a tree branch so that it dangles. You can also string them together in a chain and drape them on the tree, or even hang them in a doorway!







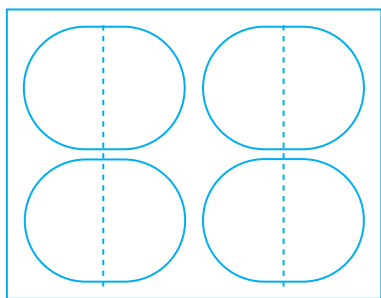


MATERIALS

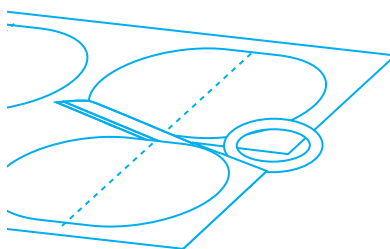
- Scissors or cutting tool
- Multi-purpose glue
- Thread, string, or ribbon (optional)
- Needle or hole punch (optional)
- Cutting mat (optional)

INSTRUCTIONS **NOTE:** Project assembly is intended for grown-ups only.

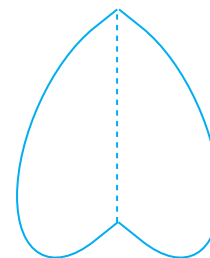
- 1** Print out page or pages, depending on how many ornaments you intend to make. Allow to dry.



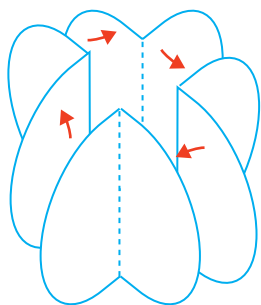
- 2** Using scissors or cutting tool, cut out the four ornament sides on the solid lines.



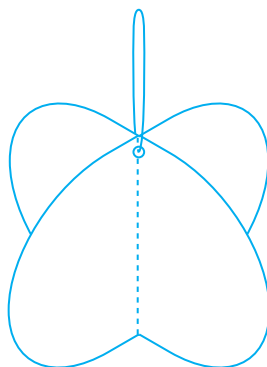
- 3** Fold the sides along the dotted lines, so that each is bent into a 90-degree angle.



- 4** Apply glue to back of sides and glue them together as shown. Allow to dry.



- 5** Either place your ornaments on tree branches or mantelpiece, or—using either a needle and thread or hole-punch and ribbon—pierce the top of the ornament and tie it to a tree branch so that it dangles. You can also string them together in a chain and drape them on the tree, or even hang them in a doorway!









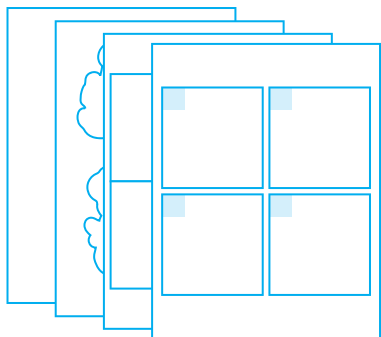
MATERIALS

- Scissors or cutting tool
- Multi-purpose glue
- Ribbon or string (approximately 12")
- Tape
- Cutting mat (optional)

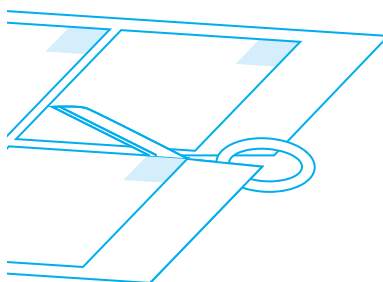
INSTRUCTIONS **NOTE: Project assembly is intended for grown-ups only.**

1 Print out 4 copies of the first two pages, double-sided, so that you can make 16 squares (the second page is printed on the back of the first). Allow to dry.

2 Print out the embellishments and circle guide. Allow to dry.



3 Using scissors, or cutting tool and cutting mat, cut along solid black lines to make 16 squares.

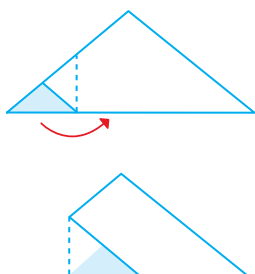


4 With the small contrasting square on your left, fold each big square in half to make a triangle. What was a small square on the left is now a small contrasting triangle.

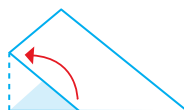


5 Repeat with all of the squares.

6 With the longest side of the triangle facing you and the small triangle still on your left, fold the small triangle 90° to the right so that it is flipped over and flush against the bottom of the big triangle.



7 Fold this triangle flap in half in the opposite direction so that the tip is pointing upward, and crease.



8 Unfold the small triangle flap, sticking your finger in to make a little cup.



Mickey Mouse Clubhouse Wreath

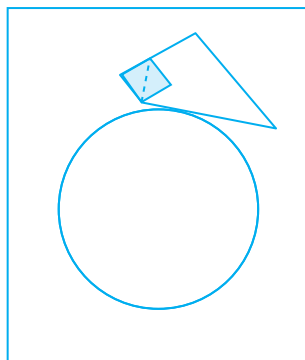
CELEBRATE
CHRISTMAS

- 9** Push in the center of the small square to flatten it, making a kite or diamond-shaped decorative square that lies almost flush against the big triangle.

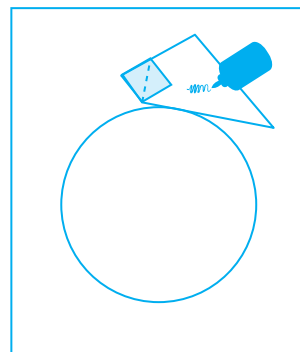


- 10** Repeat these steps with all other triangles.

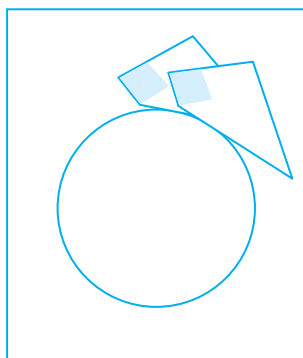
- 11** Using the circle guide, center the bottom of one of the triangles anywhere along the circle.



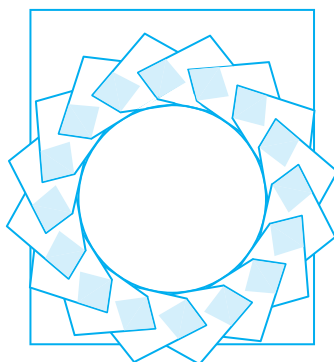
- 12** Place a dot of glue in the center of the half of the triangle opposite the decorative square.



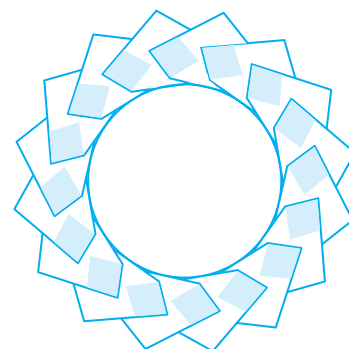
- 13** Lay another triangle on top of the glue so that the decorative squares are overlapping by the slightest amount, and the center of the bottom of the new triangle lays against the circle guide.



- 14** Repeat until the circle is complete.



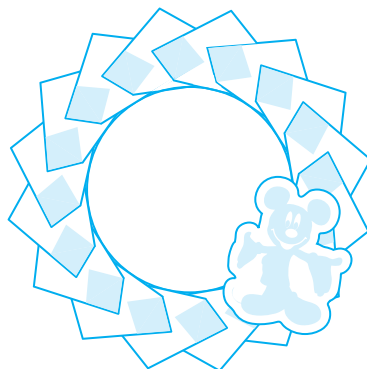
- 15** Discard the circle guide.



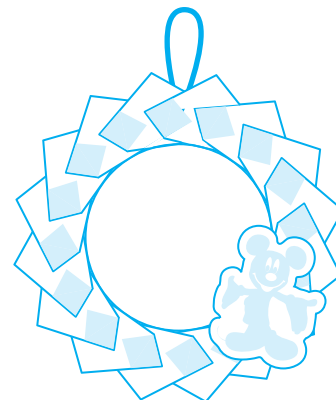
- 16** Choose your favorite embellishments and cut them out with scissors or a cutting tool.



- 17** Glue your embellishments anywhere you choose on your wreath.



- 18** Create a loop with the ribbon or string. Secure both ends at the top of the wreath with tape. Now hang your wreath!





DisneyJunior.com

