

Princess Wei Ling's Tea Party



Reminder

Cutting and scoring are intended for grown-ups only!

What You'll Need

- 8 1/2" x 11" cardstock (we recommend 110-pound paper for best results)
- Scissors
- Scoring tool
- Ruler
- Glue



How to Make It

1. Print all the pieces on cardstock.
2. Have a grown-up cut out the pieces.
3. Score along the dashed lines. Optional: Use a ruler to ensure edges are straight.
4. Fold the pieces where indicated.
5. **To make the teapot:** Take the pages labeled with Teapot Side 1 and Teapot Side 2. Glue tab A to the underside of 1, B to 2, C to 3, D to 4, E to 5, F to 6, G to 7, H to 8, I to 9, J to 10, K to 11, L to 12, M to 13, N to 14, and O to 15.
6. **To make the teapot cover:** Glue tab A to the underside of 1, B to 2, C to 3, D to 4, E to 5, F to 6, and G to 7. Attach the Teapot Cover Handle to the Teapot Cover by gluing tabs H to 8 and I to 9.

Princess Wei Ling's Tea Party



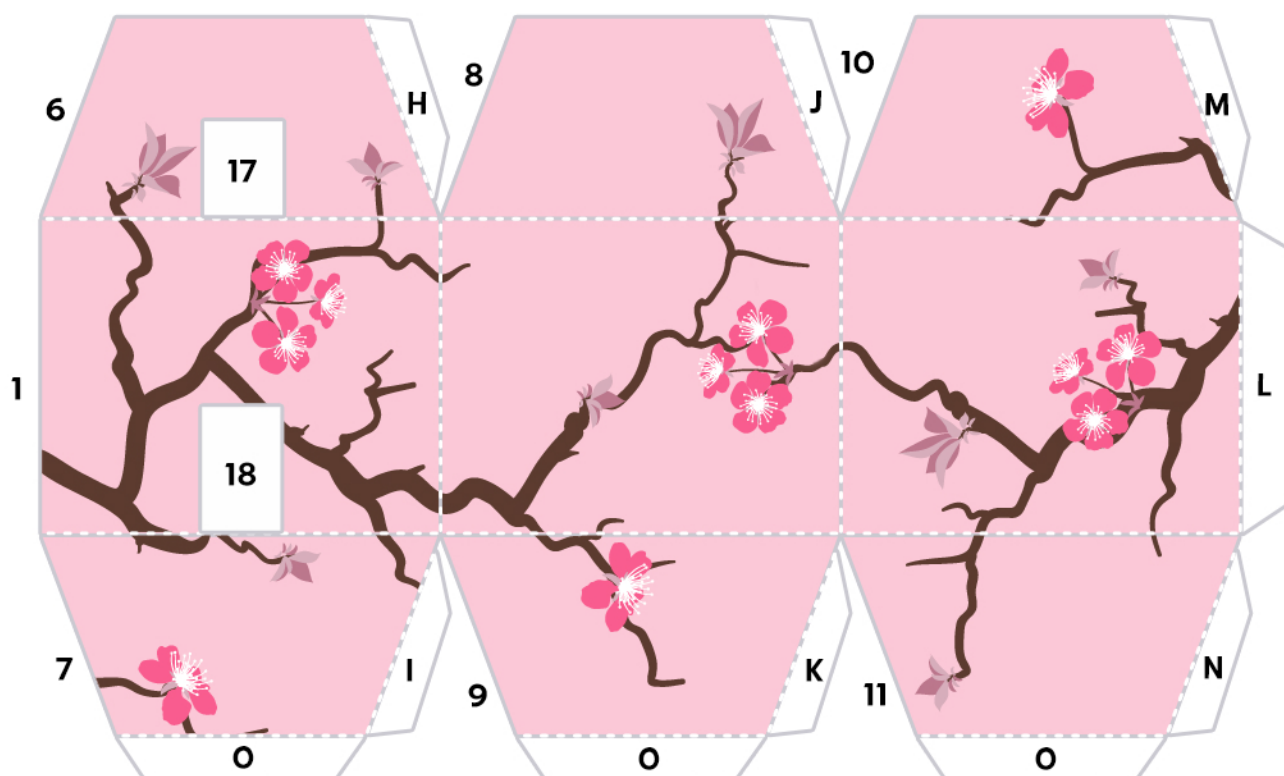
7. **To make the teapot spout:** Glue Tab A to the underside of 1, B to 2, C to 3, D to 4, E to 5, F to 6, G to 7, and H to 8. Glue I to 16 on Tea Pot Side 1 to finish.
8. **To make the teapot handle:** Glue Tab A to the underside of 1, B to 2, C to 3, and D to 4. Glue E to 17 and F to 18 on teapot side 2 to finish.
9. **To make the teacup:** Glue all of the A tabs to the undersides of the 1s, and glue Tab B to 2.
10. **To make the saucer:** Glue all of the C tabs to the undersides of the 3s, and glue Tab D to 4.
11. **To make the sugar bowl:** Glue tab A to the underside of 1, B to 2, C to 3, D to 4, E to 5, F to 6, G to 7, H to 8, I to 9, J to 10, K to 11, L to 12, M to 13, and N to 14.
12. **To make the sugar bowl cover:** Glue tab A to the underside of 1, B to 2, C to 3, D to 4, E to 5, and F to 6. Attach the Sugar Bowl Handle to the Sugar Bowl Cover by gluing tabs G to 7 and H to 8.
13. **To make the creamer:** Glue tab A to the underside of 1, B to 2, C to 3, D to 4, E to 5, F to 6, G to 7, H to 8, I to 9, J to 10, K to 11, L to 12, M to 13, N to 14, O to 15, P to 16, and Q to 17.

Princess Wei Ling's Tea Party



Teapot Side 1

Princess Wei Ling's Tea Party

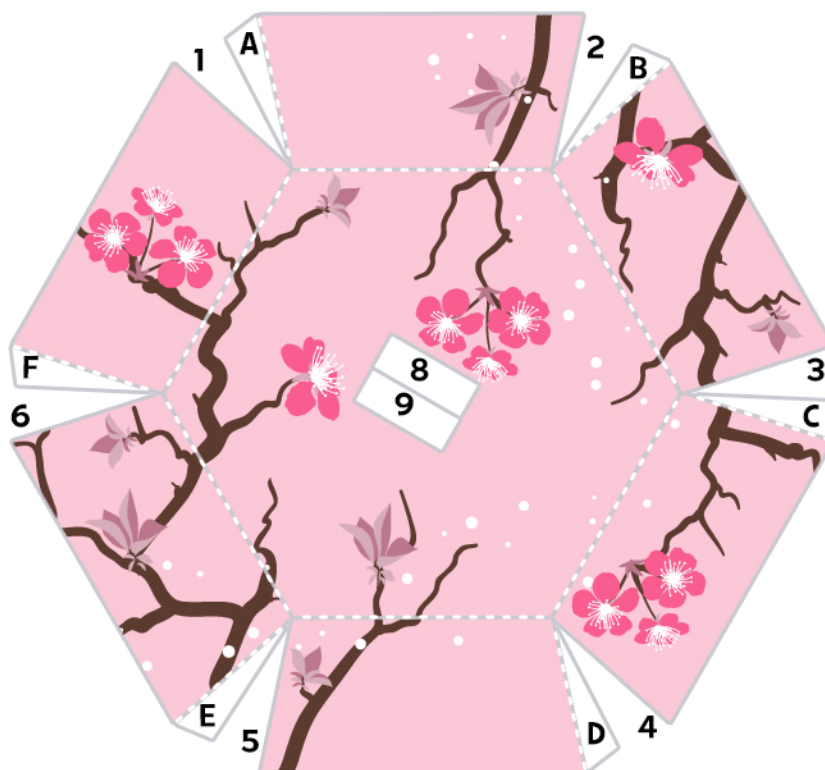


Teapot Side 2

Princess Wei Ling's Tea Party

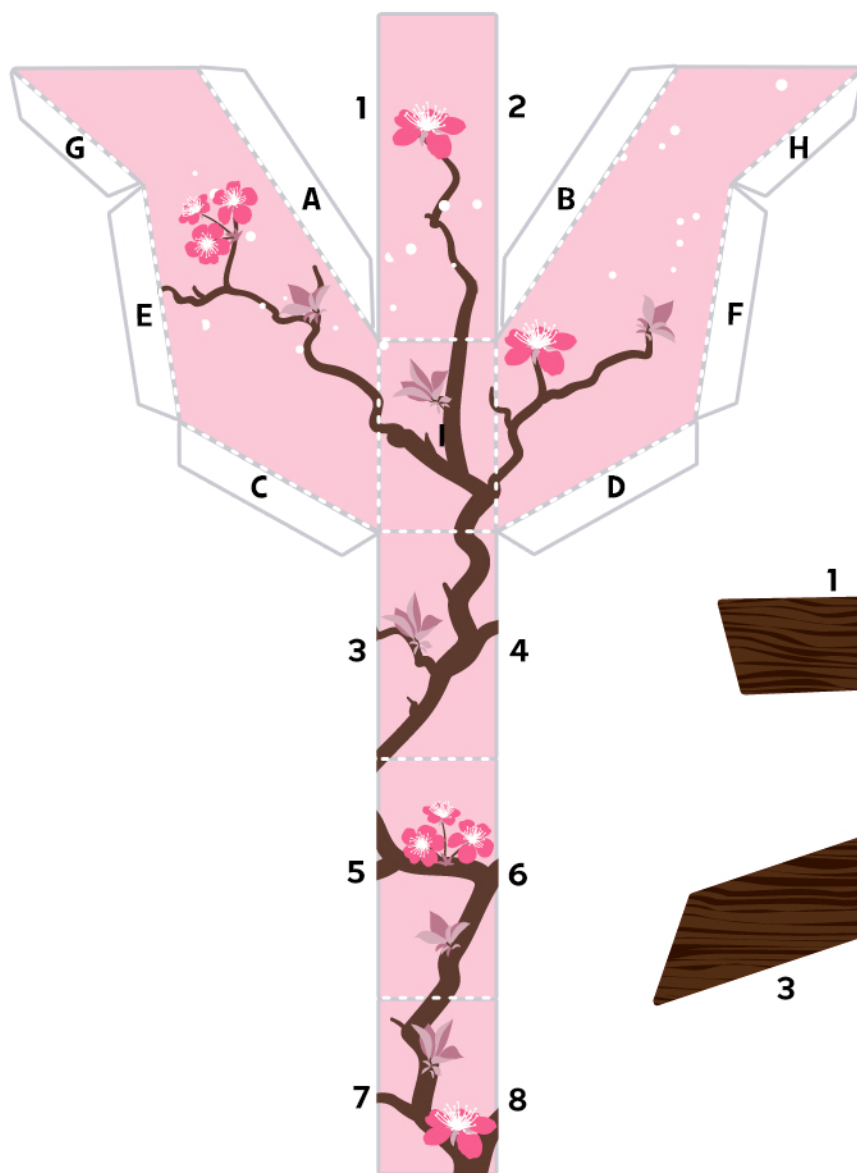


Teapot Cover Handle

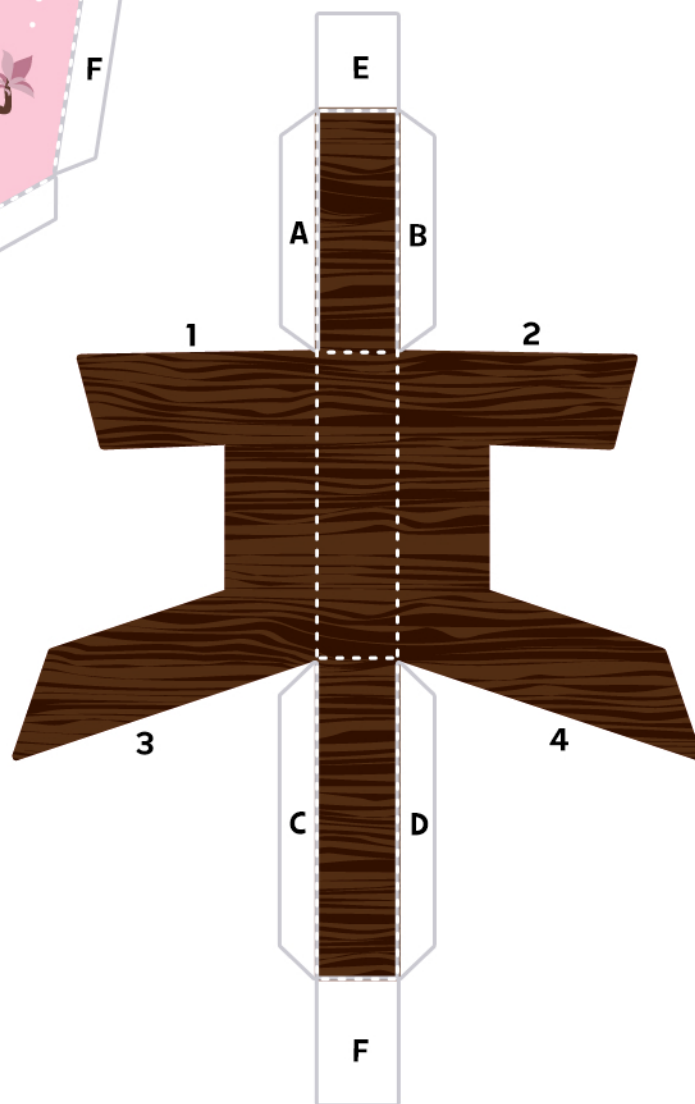


Teapot Cover

Princess Wei Ling's Tea Party

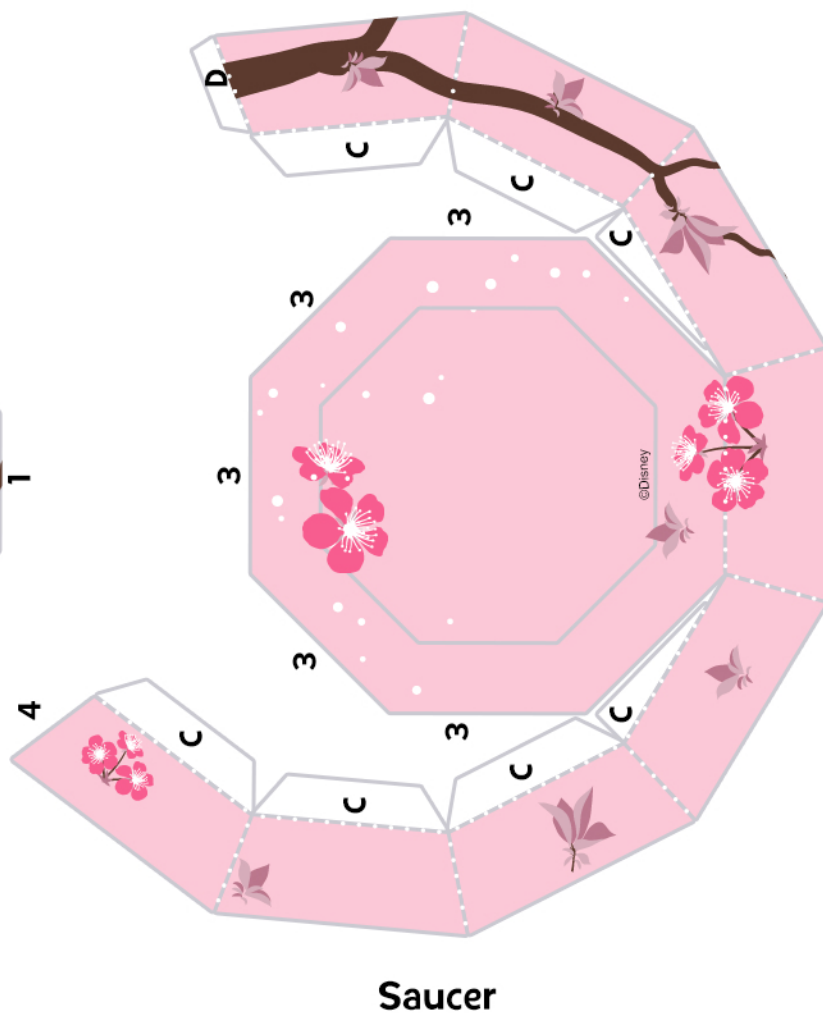
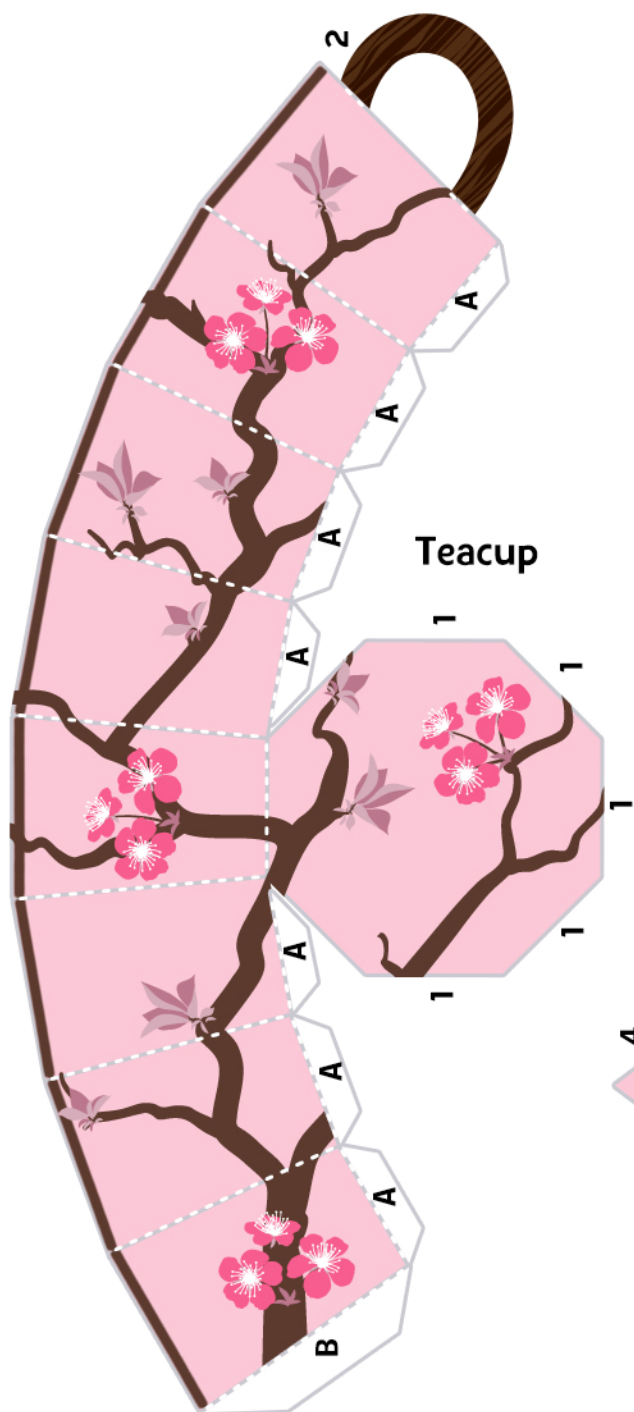


Teapot Spout



Teapot Handle

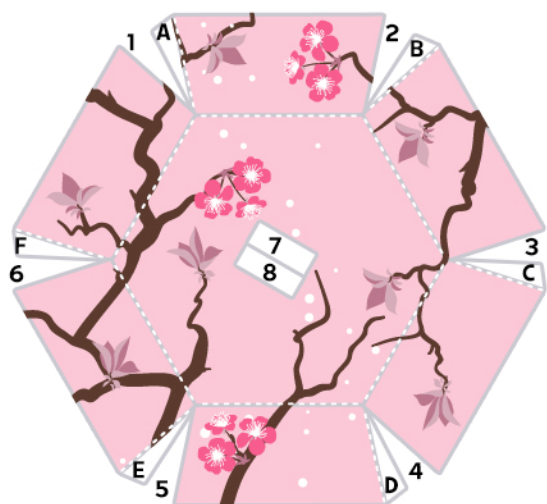
Princess Wei Ling's Tea Party



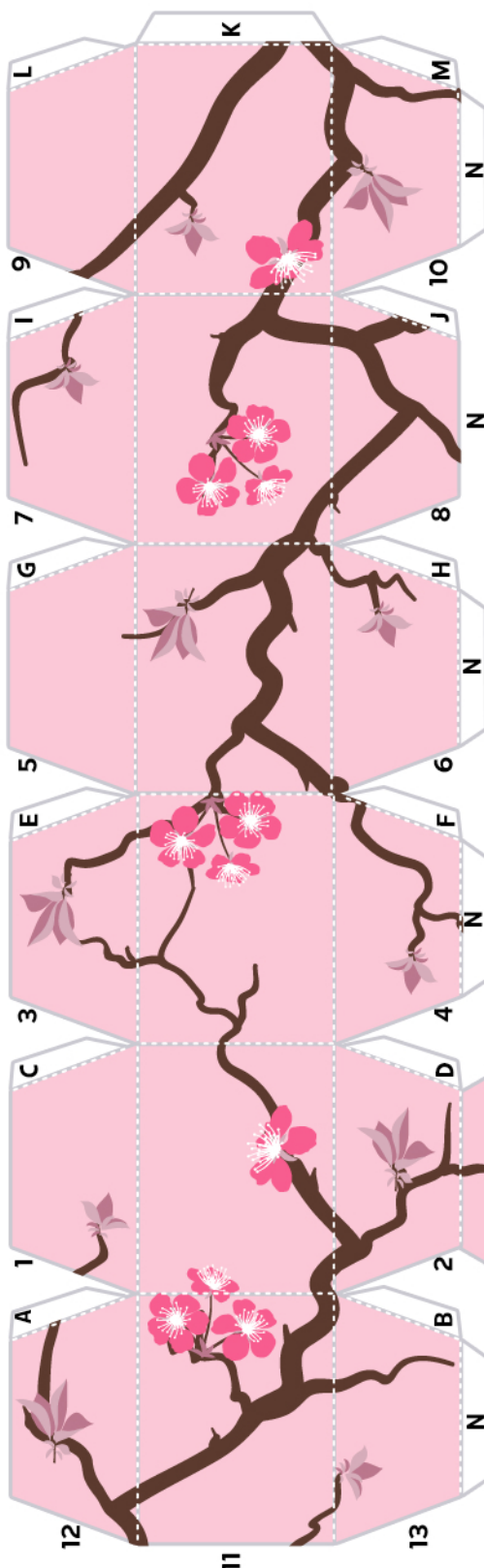
Princess Wei Ling's Tea Party



Sugar Bowl Handle

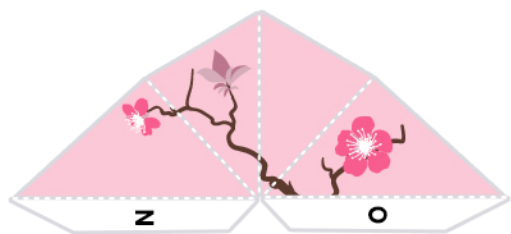


Sugar Bowl Cover



Sugar Bowl

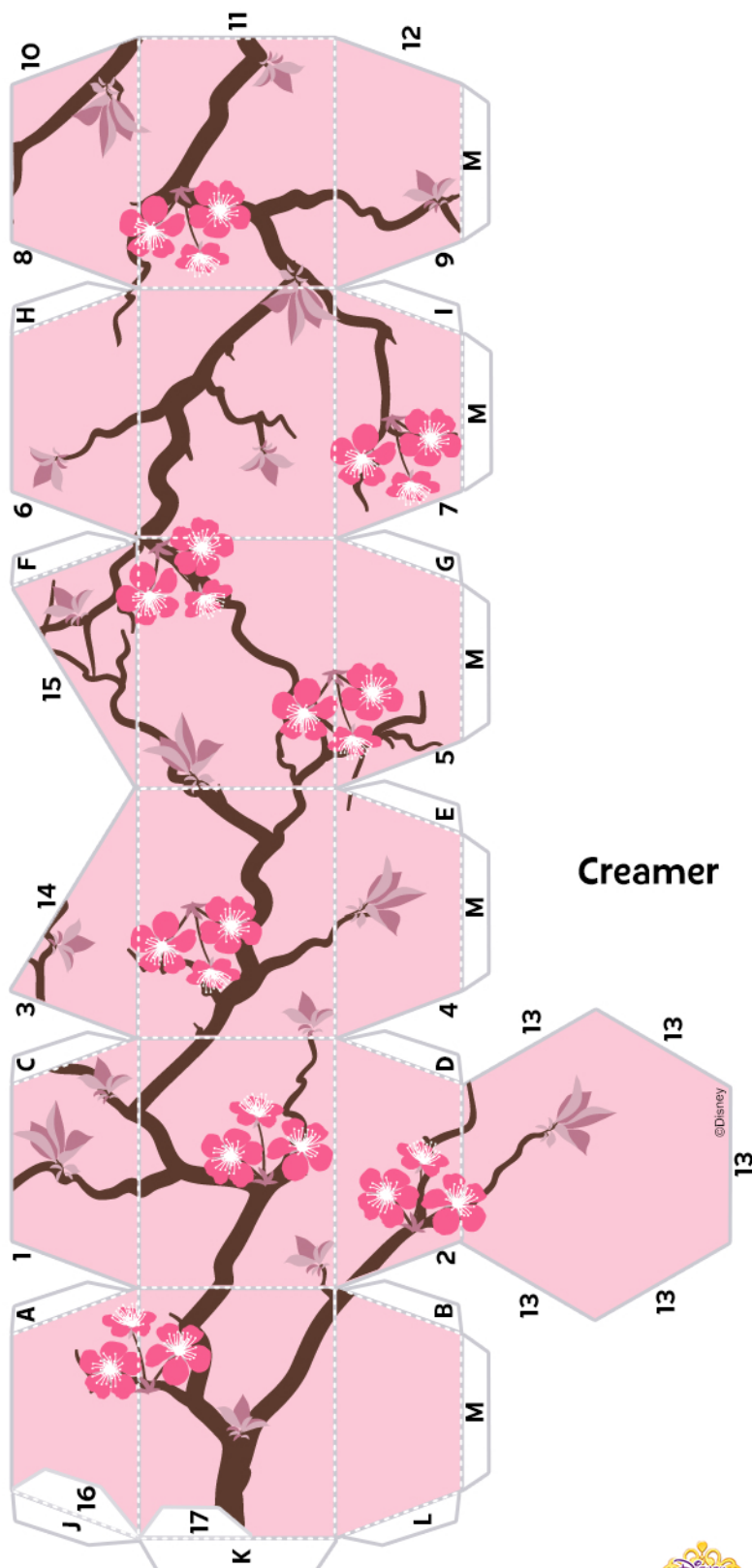
Princess Wei Ling's Tea Party



Creamer Spout



Creamer Handle



Creamer